



UK Research  
and Innovation

**HDRUK**  
Health Data Research UK

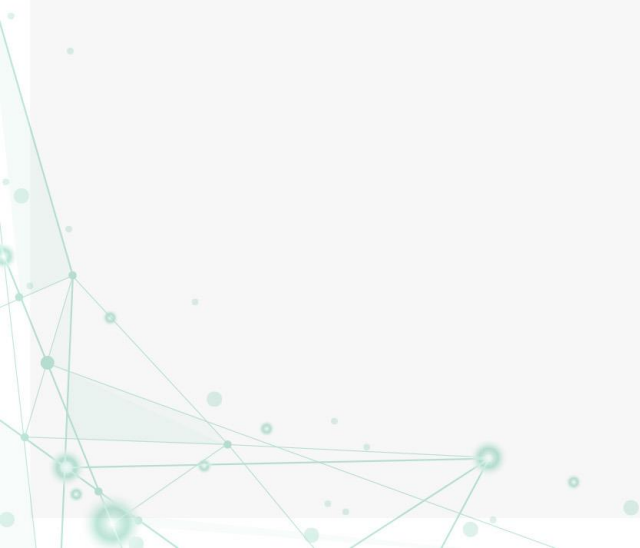


**ADRUK**  
*Data-driven change*

# What is DARE UK (Data and Analytics Research Environments UK) and why are we here today?

*DARE UK Public Dialogue workshops, January 2022*

# Key concepts



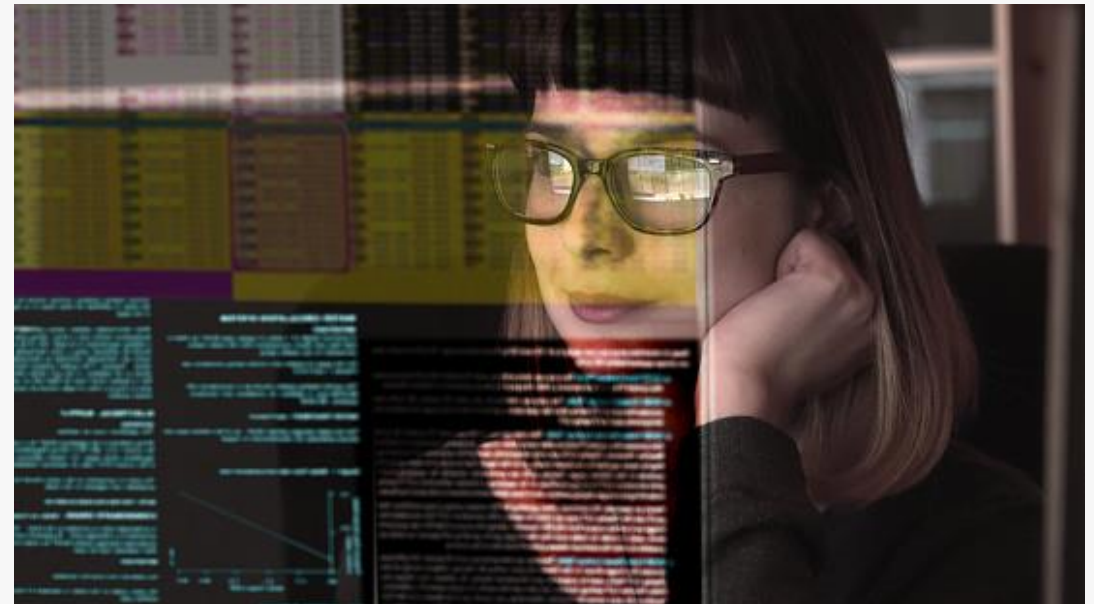
# What is sensitive data?

- Data which includes **personally identifiable information** such as names and addresses, or data which is **commercially sensitive** (has economic value)
- Data which has been **de-identified** (has had all personal identifying information removed), but is still sensitive due to the potential for re-identification



# What is data research?

- Researchers analyse sensitive data to **better understand** how society works
- The findings can help develop **better policies and services**
- UK law says that data can be used for research as long as there is a **public benefit** and the data is **kept safe and secure**



# What is data linkage?



- When different data from different places or sectors – such as healthcare and education – is linked together, this can provide valuable insights into how these two different things affect one another
- Researchers often link different records which are not already linked together to do this sort of research

# What is data research infrastructure?

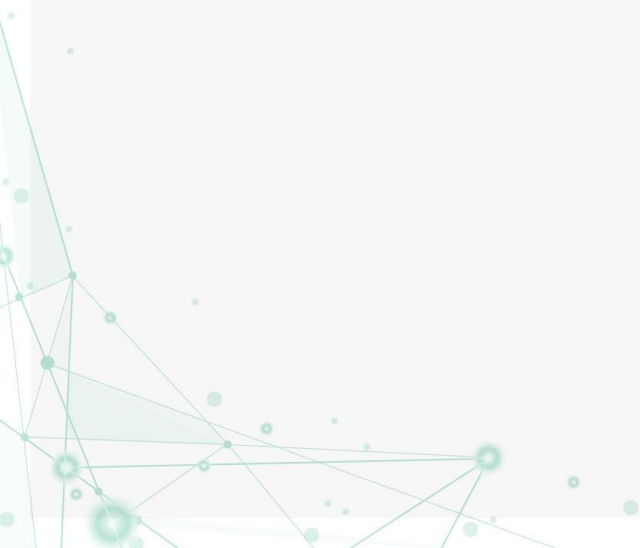
- The systems and processes in place to support data research
- **Physical systems** – such as the data centres where the data is held
- **Computer software** that researchers use
- The **governance processes** that exist around it
- The **people** who run the systems, the **researchers** themselves, and those who oversee it

**It is everything that makes data research happen.**



# **DARE UK**

## **(Data and Analytics Research Environments UK)**



DARE UK aims to design and deliver a national data research infrastructure that is **joined up, demonstrates trustworthiness** and supports **research at scale for public good.**





Data is **sensitive**, so it needs to be looked after and **people need to be comfortable**

Researchers are finding it **too long and hard to access data** for important research that will benefit the public

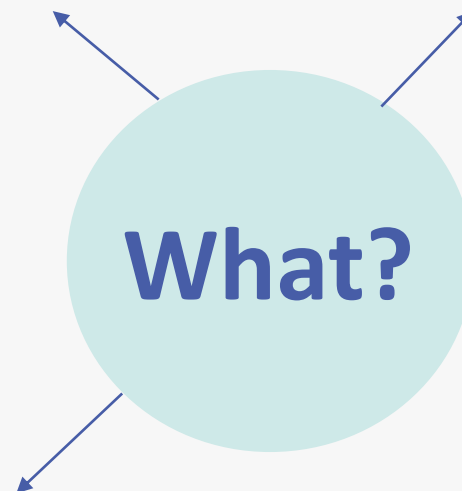
Why?

The current infrastructure is not **joined-up** – different standards and processes across systems make it hard to govern and mean capabilities are not shared

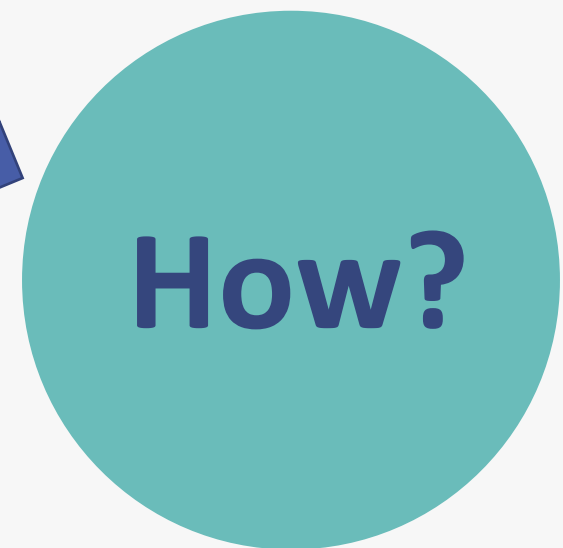
- **Balancing** greater efficiency for researchers, with trust and security, and maximising both
- We want to make it **work better for everybody**, in a safe and secure way, to maximise the public benefits

Make things more  
**standardised** so we know  
**data is secure** and so that  
**processes are smoother**

Make it more  
**trustworthy**



Enable more use of data  
in a safe and secure way  
to **maximise the public  
benefits**



# DARE UK Phase 1: Design and dialogue

*July 2021 – August 2022*

- **A listening exercise** with scientists, the public and others
- **Testing possibilities** for new technology, governance and more
- **Producing recommendations** for a more joined-up, trustworthy national data research infrastructure

## So ,what question do we want to answer today?

*What should a national data research infrastructure that is efficient, trustworthy and supports research at scale for public benefit look like?*

**We don't know the answer – we are here today to get your views and work this out together.**