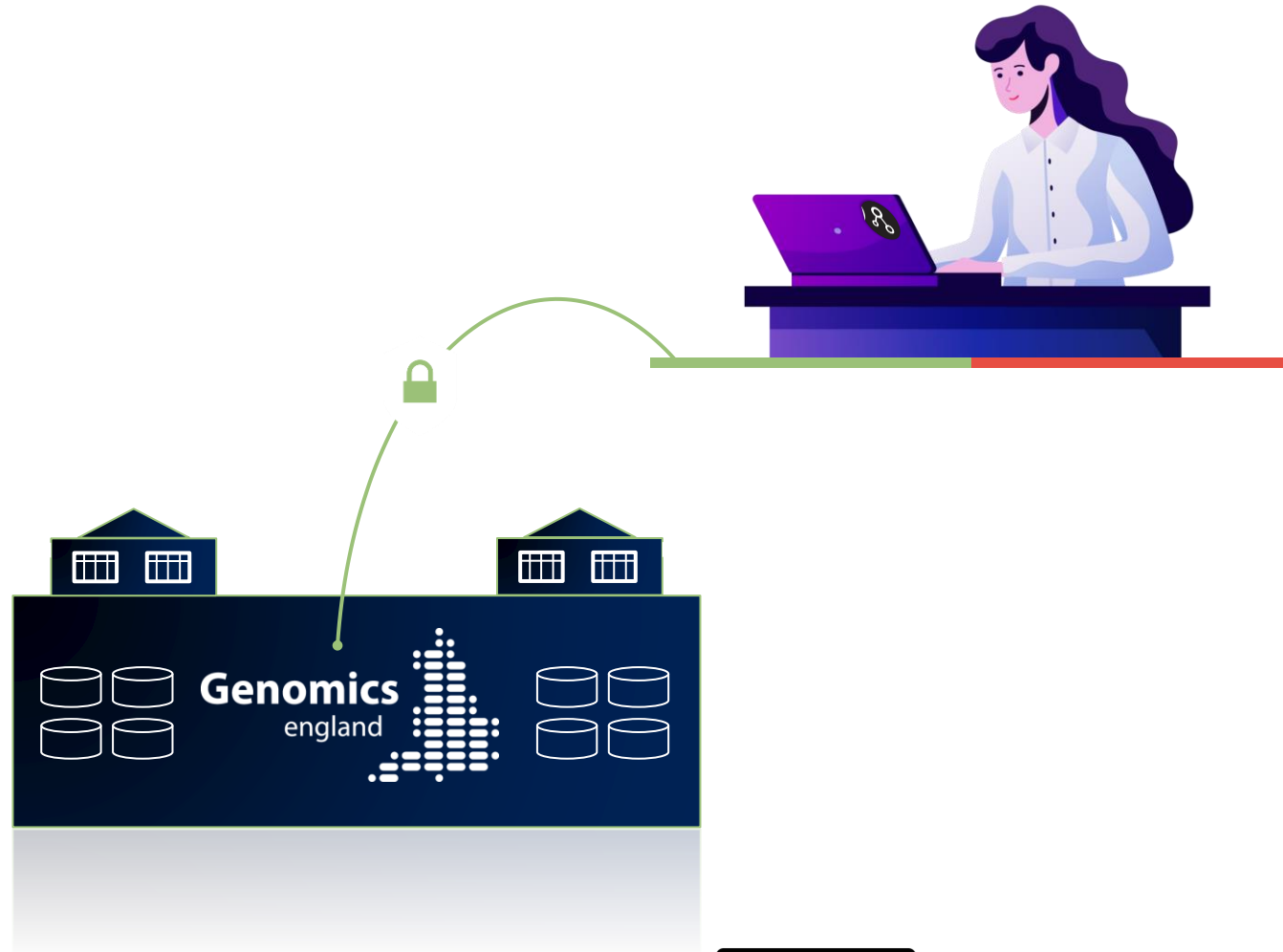


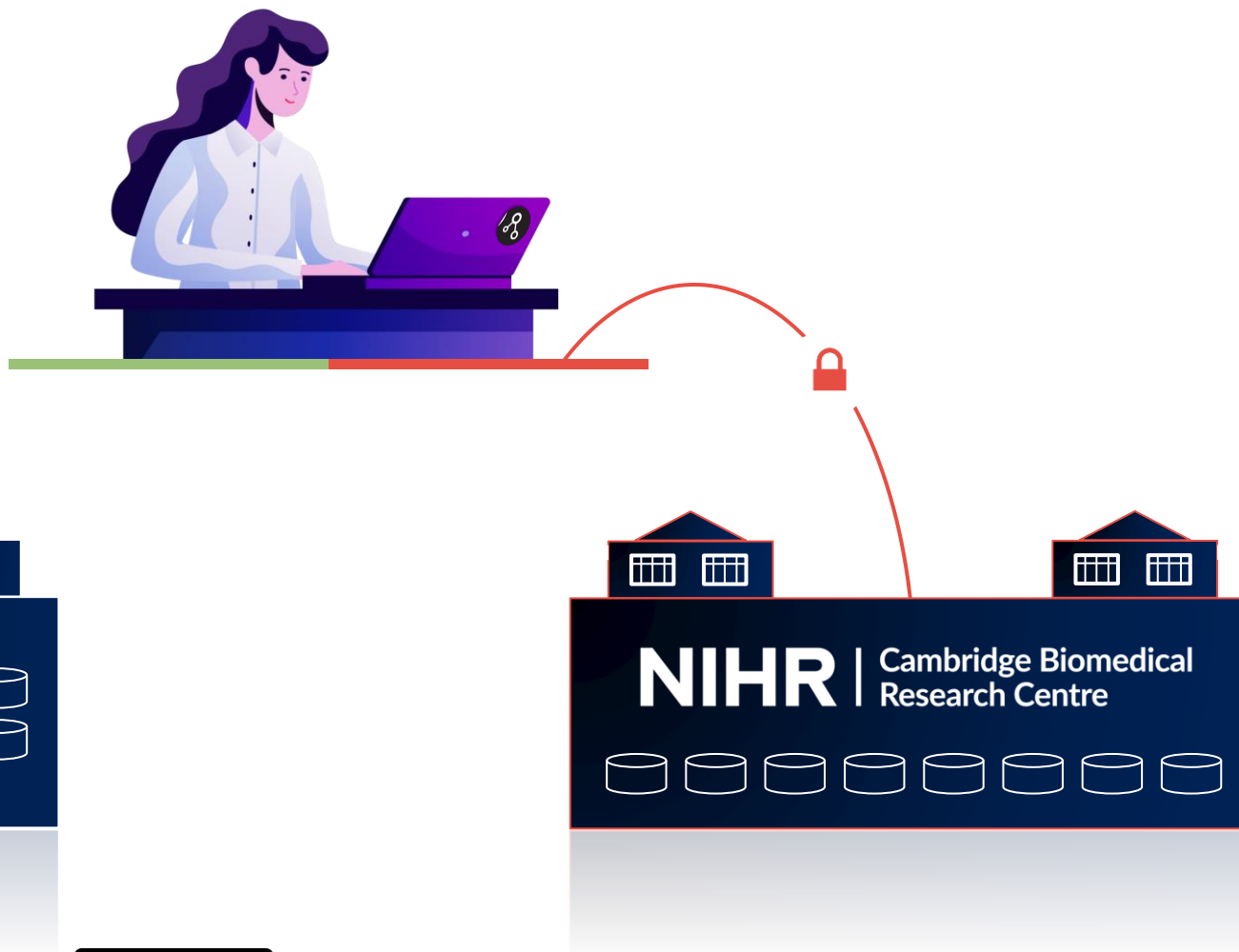
# Multi-party trusted research environment federation: Establishing infrastructure for secure analysis across different clinical- genomic datasets

Prof Serena Nik-Zainal  
Dr Pablo Prieto

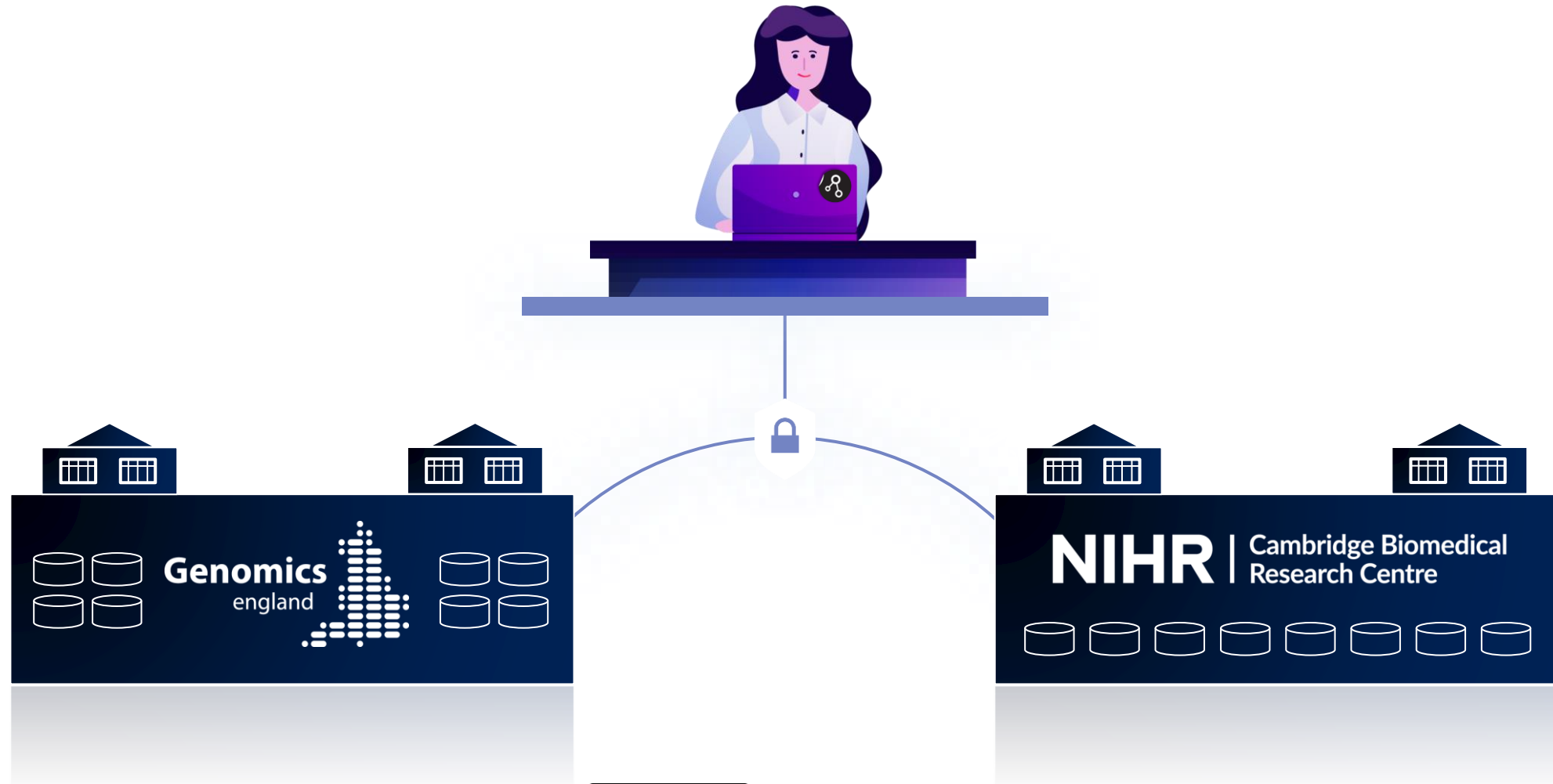
# The problem..



# The problem..



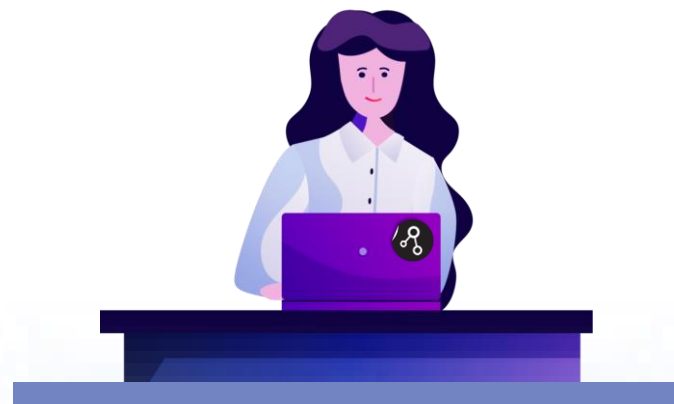
# The solution



# The solution

## Project outputs:

1. Reference architecture
2. Open-source APIs
3. Airlock design
4. Use case



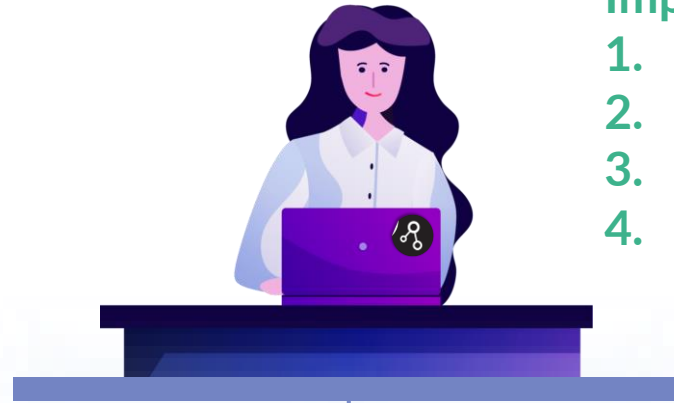
# The solution

## Project outputs:

1. Reference architecture
2. Open-source APIs
3. Airlock design
4. Use case

## Impact:

1. 1<sup>st</sup> UK HEI - Genomics England federation
2. Enables replication
3. Data governance matters
4. Increased discoverability

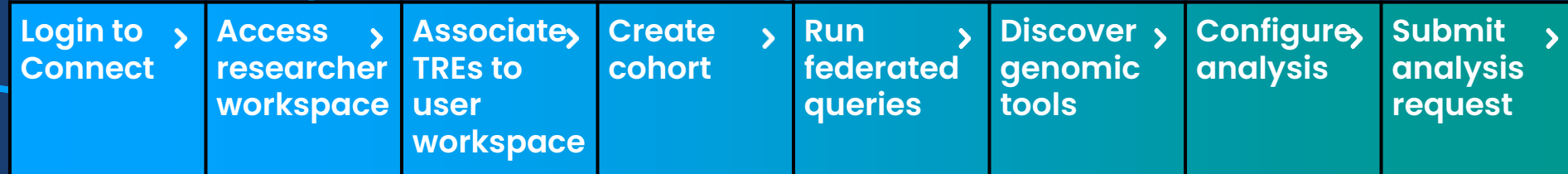


# Federated Analysis Journeys



Researcher logs into Platform

## Researcher request for federated analysis



Start TRE analysis



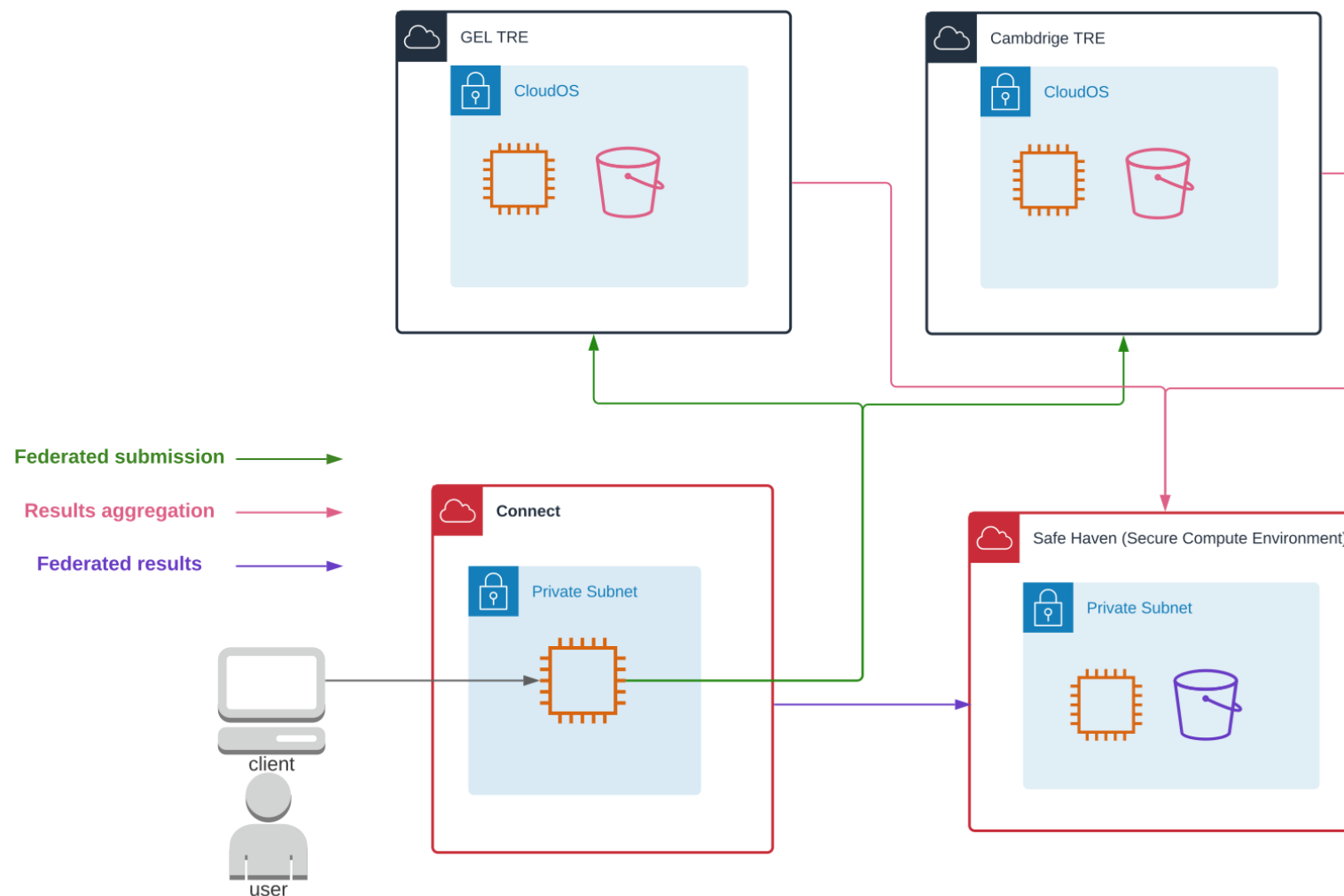
Federated Platform analysis

## Federated analysis to results



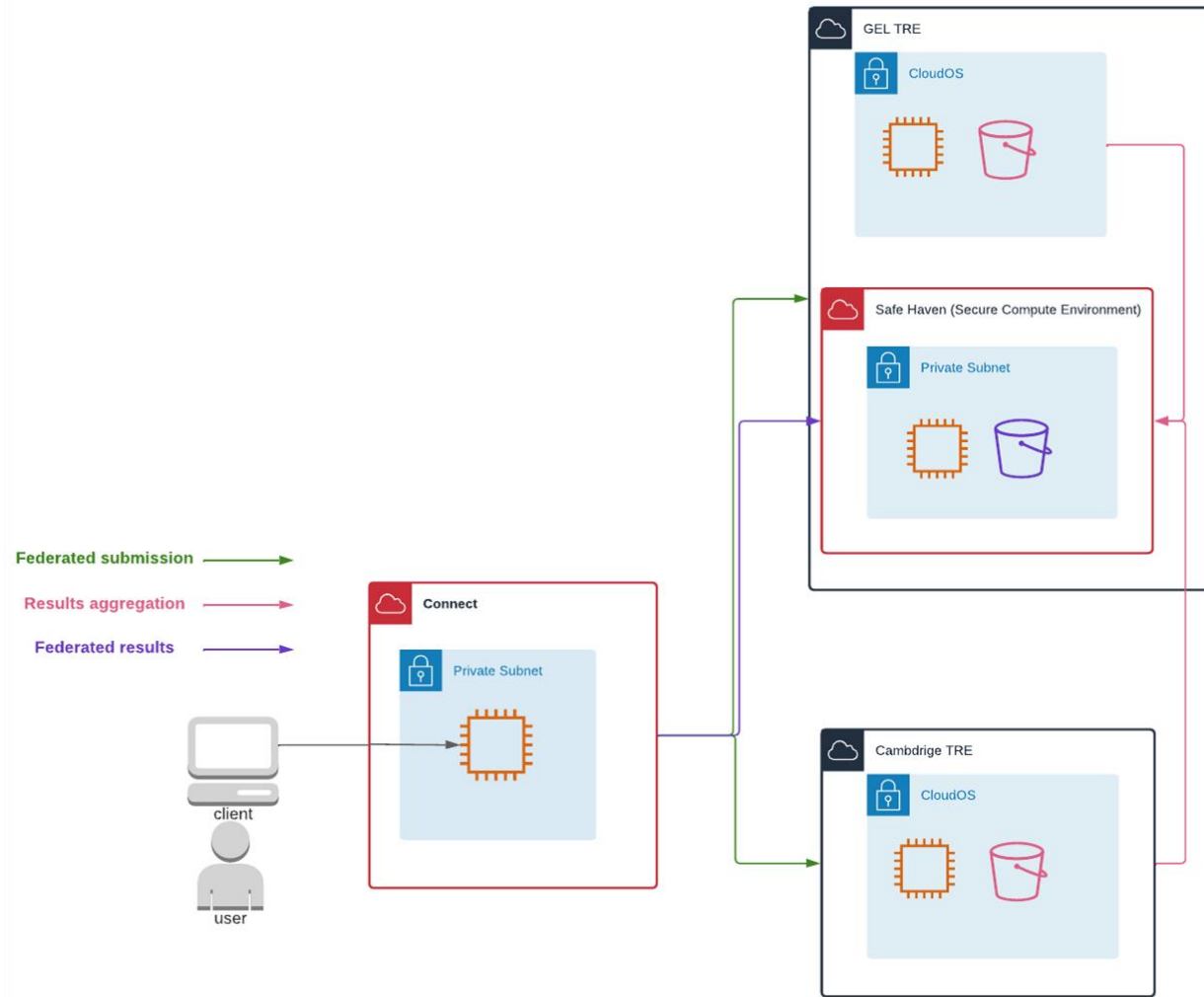
User access results

# High level architecture





# Revised High level architecture



# Patient & public involvement

- Patient partner
  - Contributed to writing the bid
  - Sits on our Sprint Strategic Partnership Board
  - Attends technical workshops
  - Reviews documentation
- Q&A session held in February with a patient panel
  - FAQ document to help explain the project produced, in final review
- A combined patient & public panel from Genomics England and Cambridge University Hospitals took part in a discussion around models for Data Access Review

# End