
The logo for UK TRE, featuring the letters 'UK' stacked vertically on the left and 'TRE' in a larger font to the right, all in a teal color.

UK TRE

trusted research environment

UK TRE community

Introducing the community



- Established at **RSE Con 22**
 - Output from the TRE Satellite event
- Set up as the 'RSE TRE community', a group of people, projects and organisations working on open-source TRE infrastructure.
- Recently renamed to become the **UK TRE community**

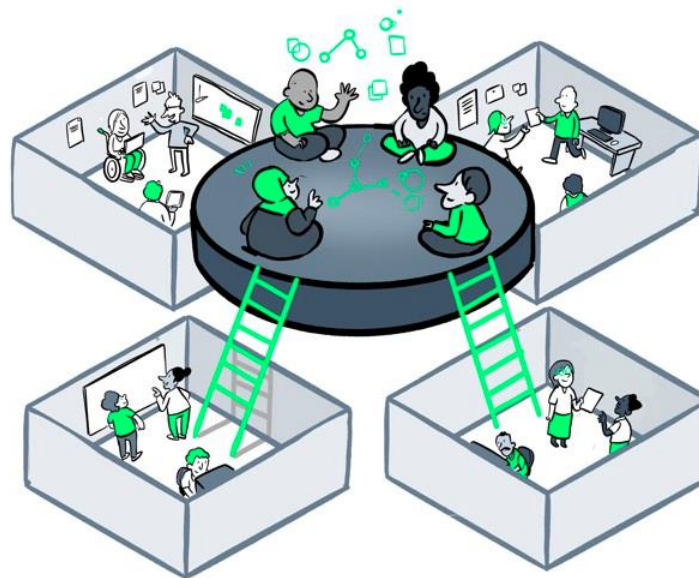
We're still very flexible!!

What we stand for

The Newcastle Commitment

Key principles

- Openness
- Collaboration
- Standardisation
- Bringing together the UK TRE community



Scriberia

Ways of working

Quarterly Meetings

3 online

1 in-person/hybrid

Working groups

Open Source TREs

Funding &
Sustainability

Information
Governance

Community
Management

Engagement

70+ subscribed to mailing list

70+ on Slack channel

30+ at each community event

Quarterly meetings

Quarterly meetings

'Keynote' presentations

Bringing the community up to date with core developments in the TRE space

DARE UK



Quarterly meetings

'Keynote' presentations

Bringing the community up to date with core developments in the TRE space

DARE UK



Project workshops

Group problem-solving key issues facing specific project teams



Cost recovery



Whitelisting software packages



User experience testing

Quarterly meetings

'Keynote' presentations

Bringing the community up to date with core developments in the TRE space

DARE UK



Project workshops

Group problem-solving key issues facing specific project teams



Cost recovery



Whitelisting software packages



User experience testing

Breakout discussions

Sharing knowledge and ideas on more general TRE issues and discussion areas



Data classification



TRE architectures



Federation standards

Working groups

Working groups

Open Source & Open Standards

Promoting open standards and open source TRE infrastructure

Working groups

Open Source & Open Standards

Promoting open standards and open source TRE infrastructure

Community Management & Engagement

Running this group effectively, and engaging all relevant stakeholders

Working groups

Open Source & Open Standards

Promoting open standards and open source TRE infrastructure

Community Management & Engagement

Running this group effectively, and engaging all relevant stakeholders

Funding & Sustainability

Exploring funding models and operation models to enable long-term sustainability and realisation of TRE infrastructure

Working groups

Open Source & Open Standards

Promoting open standards and open source TRE infrastructure

Community Management & Engagement

Running this group effectively, and engaging all relevant stakeholders

Funding & Sustainability

Exploring funding models and operation models to enable long-term sustainability and realisation of TRE infrastructure

Information Governance

Managing information governance requirements within TRE infrastructure, and moving towards standardisation

Working groups

Open Source & Open Standards

Promoting open standards and open source TRE infrastructure

Community Management & Engagement

Running this group effectively, and engaging all relevant stakeholders

Funding & Sustainability

Exploring funding models and operation models to enable long-term sustainability and realisation of TRE infrastructure

Information Governance

Managing information governance requirements within TRE infrastructure, and moving towards standardisation

Focus areas

1. Establish the UK TRE Community position on sustainable funding: through a position paper on behalf of the UK TRE Community Group towards sustained funding over adequate time horizons for TRE (software) engineering efforts and open source components supporting them
2. Costing models: collect use cases and offer reference costing model(s) or benchmark(s). The WG will put together a comprehensive list of costings (at line item level), scenarios and considerations drawn from the WGs members' experience and the wider Community Group
3. Charging and cost recovery models: the WG will start with existing experiences of different charging models (e.g. data access charges) and how they work in their specific environments, to try and bring this together as a reference knowledge base for the Community Group to draw on.

Community resources



[ReadTheDocs](#)



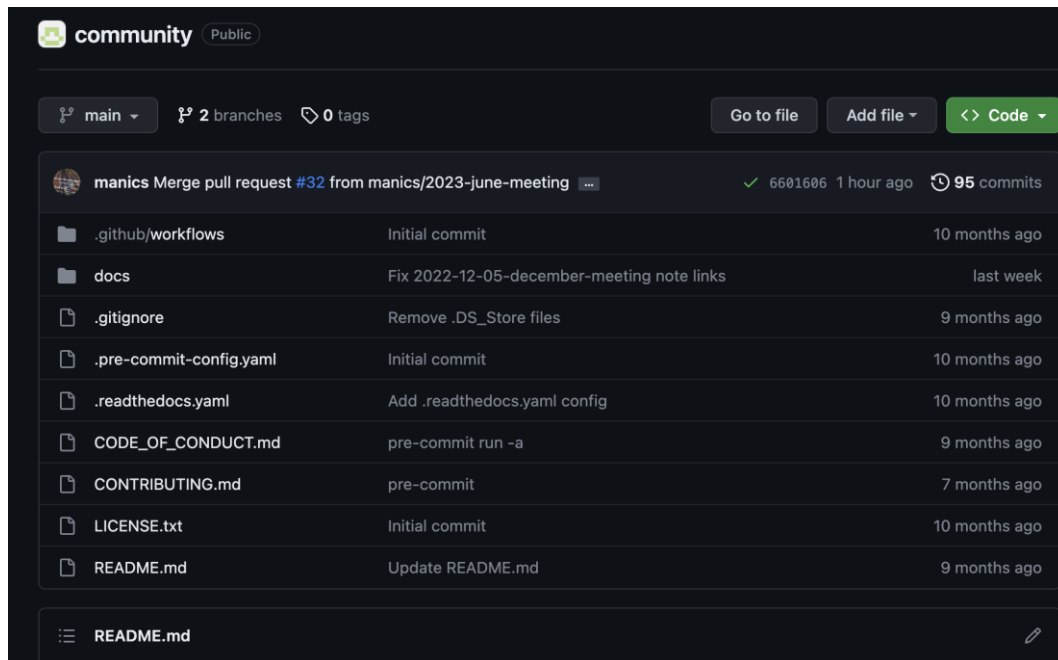
[Open repository](#)



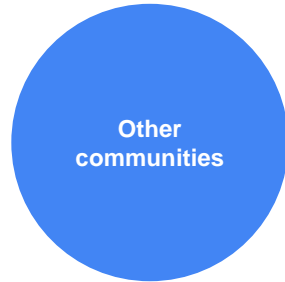
Slack channel [#rse-tre-wg](#)



[Jisc Mailing list](#)



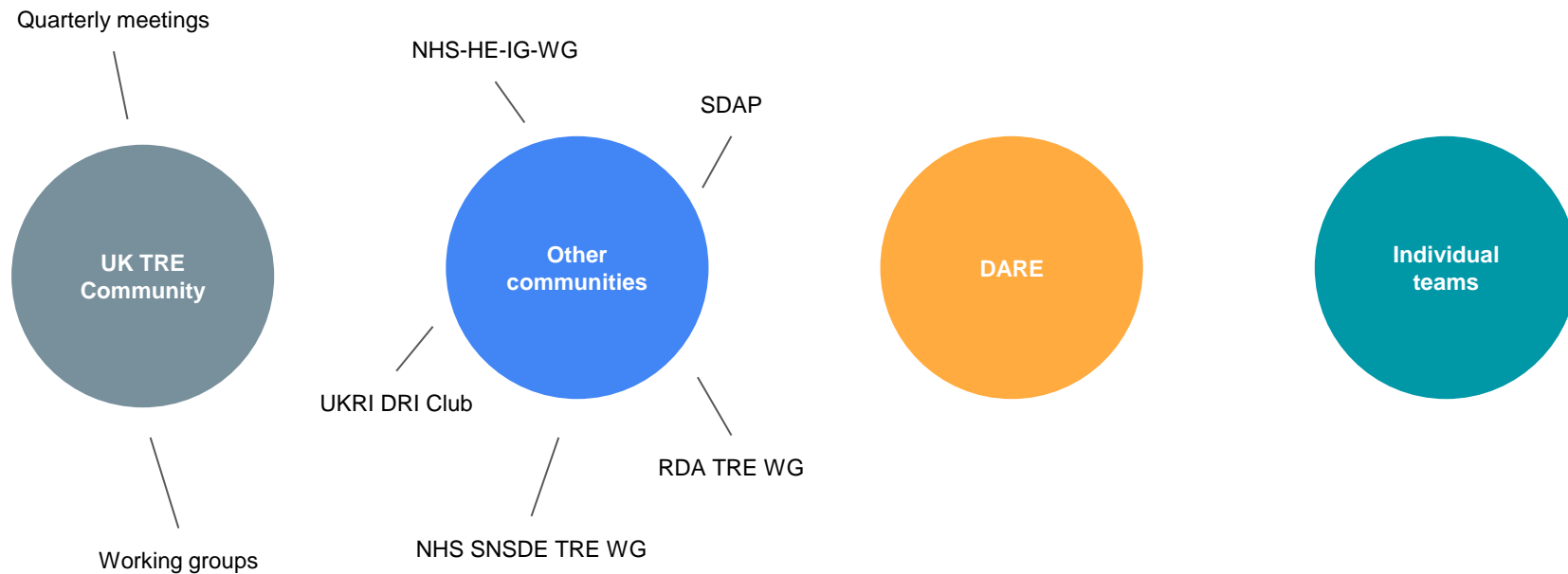
Where we are currently at



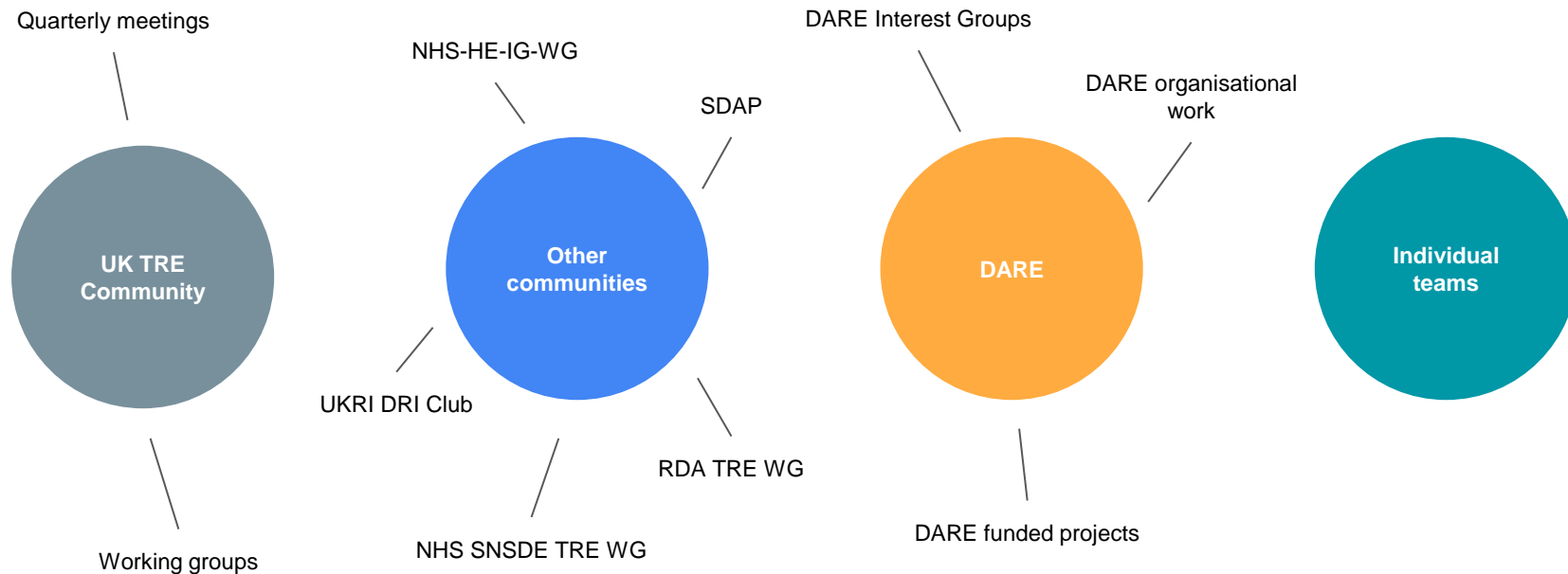
Where we are currently at



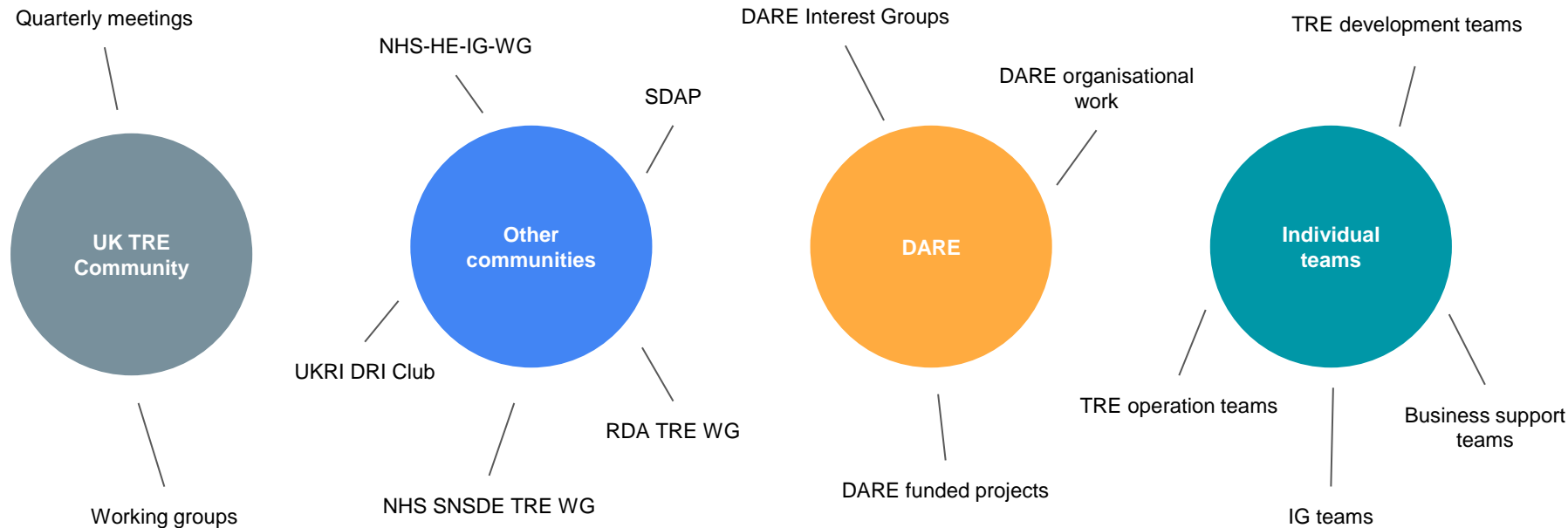
Where we are currently at



Where we are currently at



Where we are currently at



Ongoing questions

How do we best take this community forwards?

- How do we **bring together and link up** all the high energy in this space effectively?
- What **resources and support** does this community need to thrive?
- How are different **teams, projects and communities** connected to each other, and what function do they all serve?
- **Who can we learn from** to get the most out of this community?
 - E.g. the Turing Way, RDA, SDAP...



Scriberia

RSE Con 23

When: Monday 4th September 2023, all day, **FREE**

Where: Swansea University (limited online options)

Aim: Be the biggest meetup of the UK TRE community to date!



REGISTER HERE:

<https://www.eventbrite.co.uk/manage/events/676066472017>