



DARE UK Community Groups: Strengthening collaborations, driving impact

Monday, 24 February 2025



Agenda for today

| Agenda Item | Details |
|---|--|
| Welcome and Introduction (5-10 mins) – DARE UK | Brief introduction to DARE UK Community Groups initiative and where we are now. |
| Lightning Talks from Interest Groups (~50 mins total) | <p>3-4 mins for presentation + 2 mins for questions for each group. Presentation order:</p> <ul style="list-style-type: none">• Statistical Disclosure Control – Reducing Barriers to Outputs from TREs (SDC-REBOOT)• UK TRE Community – Community Management and Engagement• Public Engagement and Data Research Initiative (PEDRI)• UK TRE Community Information Governance Interest Group• Best Practice for Research Imaging (BESTIES)• Standardised Architecture for Trusted Research Environments (SATRE)• Secure Data Access Professionals (SDAP)• International Secure Data Facility Professionals Network (ISDFPN) |
| Lightning Talks from Working Groups (~12 mins total) | <p>3-4 mins for presentation + 2mins for questions for each group Presentation order:</p> <ul style="list-style-type: none">• Synthetic Data Working Group• PEDRI PIE Good Practice Standards Evaluation and Adoption Working Group |
| Closing Remarks and Call to Action (5 mins) – DARE UK | |

House rules

- Please remain **muted** at all times unless invited to ask a question during the Q&A session.
- To ask a question during the Q&A session: please use the '**raise hand**' **function** if you wish to ask a question out loud; or you can ask your question via the **chat box** before and during the Q&A session.
- During the discussion, please remain respectful, do not interrupt others and ensure any questions or comments remain on-topic.
- Please keep your **video** off during presentations – you are encouraged to turn your video on during the Q&A/discussion session.
- The webinar is being **recorded**.

Introduction to the DARE UK Community Groups initiative



Vision

For all research and innovation to benefit from seamless, secure use of diverse sensitive data, at a pace, efficiency and scale approaching that of the open data ecosystem, that revolutionises research productivity and accelerates research to deliver public good.

Mission

To put the UK at the forefront of sensitive data research and innovation by assembling the tools, technologies and standards needed to streamline secure data linkage and use.

DARE UK

Phase 1: Design & Dialogue

July '21 – March '24

£7.5m

DARE UK

Phase 2: Build, Test & Establish

August '24 – March '27

£18.2m

DARE UK Community Groups (The ‘what’)

Modelled on the Research Data Alliance community groups: open invitation for people to submit proposals that align with the DARE UK vision and objectives

Community Charter



*Common,
specific
purpose*

Code of conduct



*Clear rules
and
expectations*

Co-Chair leadership



*Identifiable,
motivated
leadership for
community
coordination*

Open publishing



Transparent

Different kinds of DARE UK community groups for different functions...

1) Interest Groups

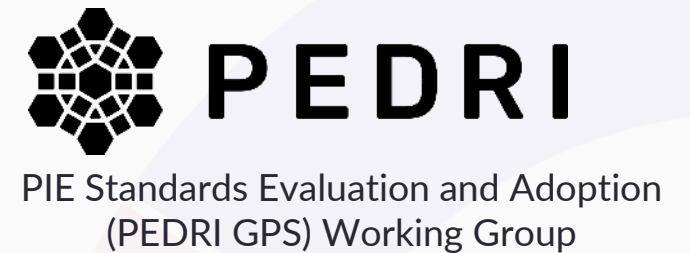
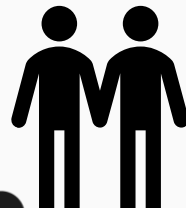


Different kinds of DARE UK community groups for different functions...

1) Interest Groups



2) Working Groups



Different kinds of DARE UK community groups for different functions...

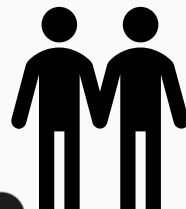
1) Interest Groups



3) Communities of Practice



2) Working Groups



Current DARE UK community groups: 2023



STRE

Community Management
and Engagement IG



PEDRI

Interest Group



SDC-REBOOT
COMMUNITY



DARE UK community groups: 2025

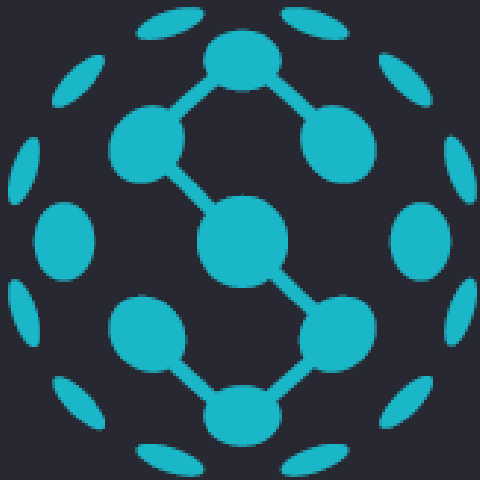


Community Group Lightning Talks

Statistical Disclosure Control – Reducing Barriers to Outputs from TREs (SDC-REBOOT)

developing and *sharing* and best
practices in Output Statistical
Disclosure Control ...

...to ensure *research outputs*
(especially AI) *protect private*
data and keep it secure



SDC-REBOOT
COMMUNITY

Building *capability*
and *capacity*

Themes

Peer support for adoption

Theory and standards
development and dissemination

Risk assessment of ML models

Activities

Monthly virtual meetings

Website development(s)

F2F meeting in September

Partners

DARE Communities of Interest

TREvolution



Data services – not just TREs



International partners

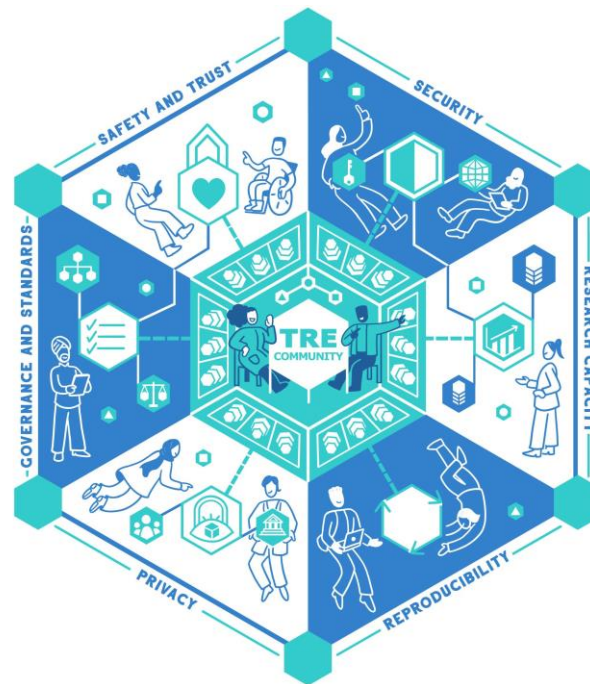


SDC-REBOOT
COMMUNITY

<mailto:sdc-reboot@jiscmail.ac.uk>

UK TRE Community – Community Management and Engagement Interest Group

UK TRE



UK TRE

The UK TRE community: DARE UK Community Groups: Strengthening Collaborations, Driving Impact

Pete Barnsley (UK TRE co-chair, Francis Crick Institute)

Current Co-chairs

Pete Barnsley, Francis Crick Institute
Madalyn Hardaker, Kings College London
David Sarmiento, Alan Turing Institute
Simon Li, Dundee University

24th February 2025

The UK TRE Community on a page

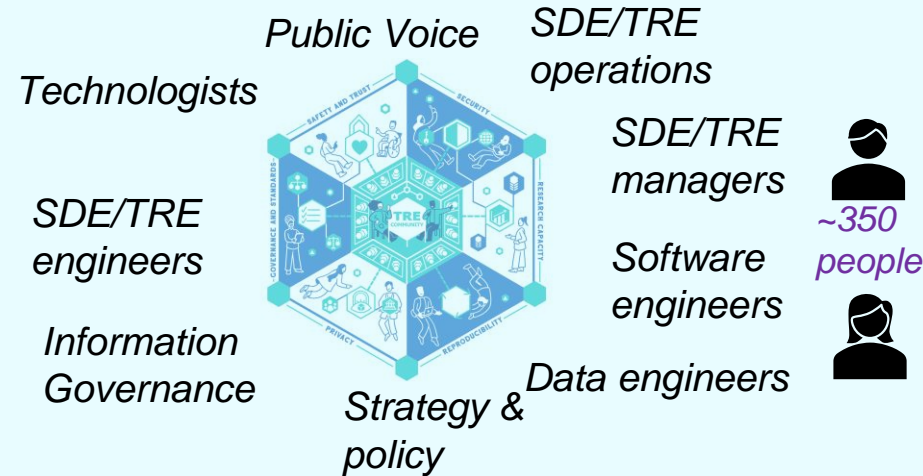
SDE = Secure Data Environment
TRE= Trusted Research Environment



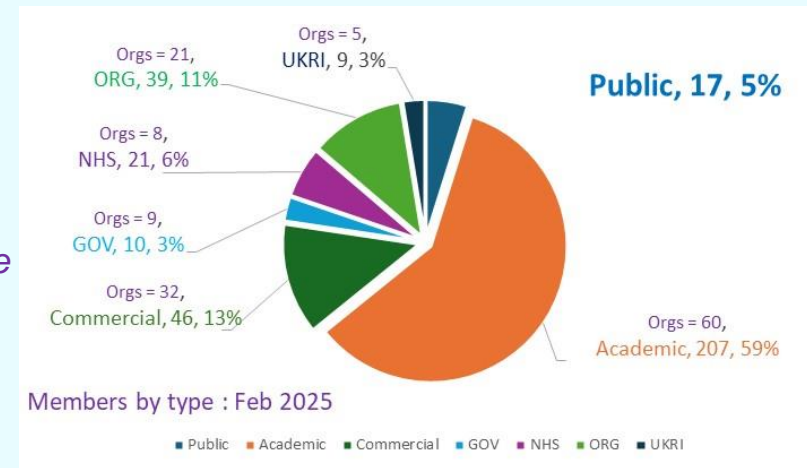
Our History



Member skills



Member affiliations



Seven Working groups

- Funding and Sustainability** – how to fund
- Citizen Agency** –ensure public choice
- SDE / TRE Definition** – how they differ
- Extending Control** (Information Governance)
- Glossary** - what words mean
- Cybersecurity Risks**
- SATRE** – specification for TREs

Thank You!

Please feel free to join (your Community)

Get involved



[Website](http://uktre.org)
uktre.org



[Repository](https://github.com/uk-tre)
github.com/uk-tre



[Mailing list](mailto:UK-TRE-COMM@JISCMAIL.AC.UK)
UK-TRE-
COMM@JISCMAI
L.AC.UK



[Slack channel](#)



[YouTube](https://www.youtube.com/channel/UCd7AZjyH33aCmlojGHMfqEg)

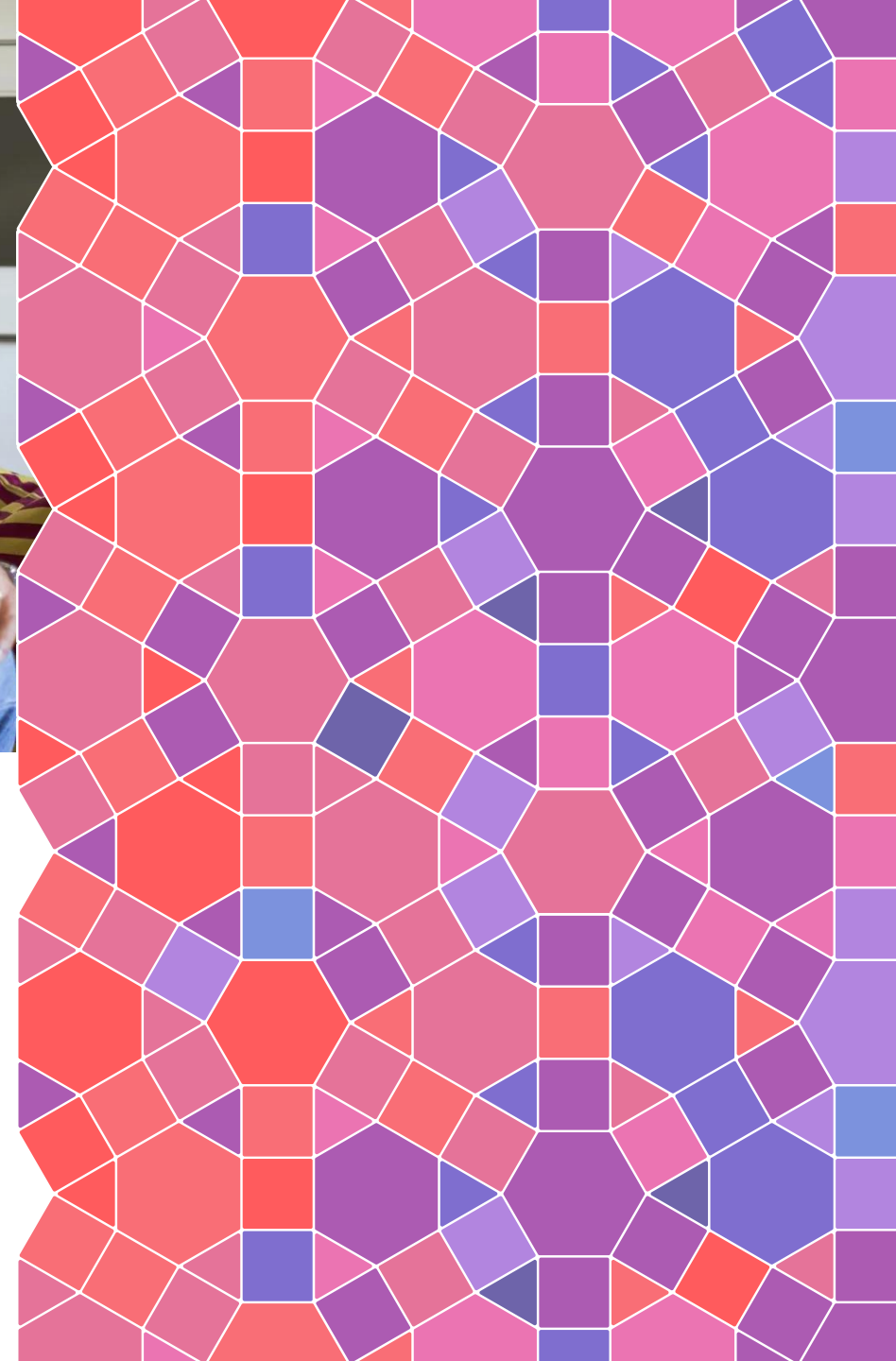
[https://www.youtube.com/ch
annel/UCd7AZjyH33aCmloj
GHMfqEg](https://www.youtube.com/channel/UCd7AZjyH33aCmlojGHMfqEg)

Public Engagement in Data Research Initiative (PEDRI) Interest Group

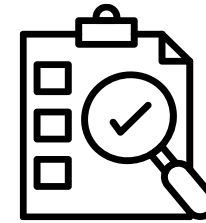
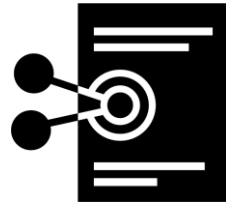
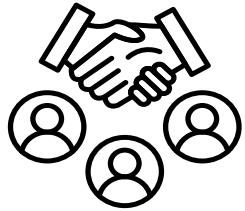


Public Engagement in Data Research Initiative/ DARE Interest Group

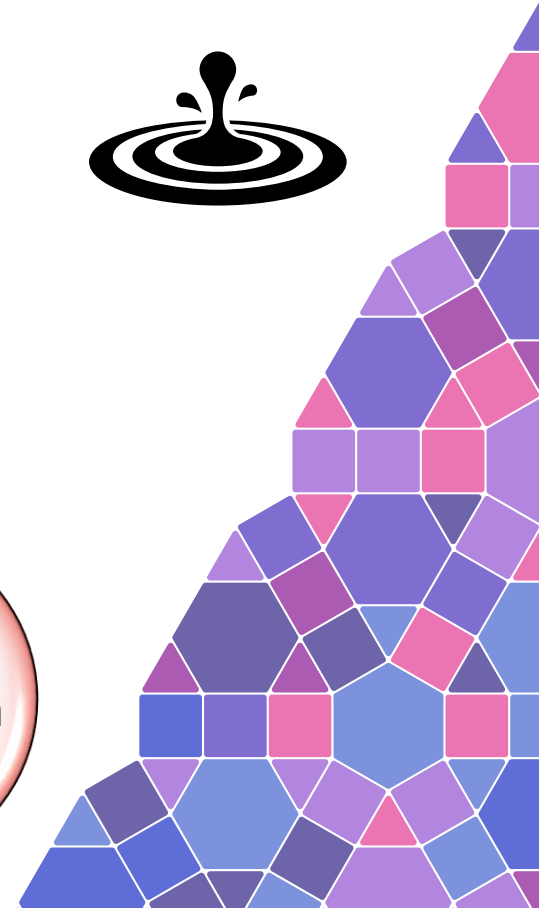
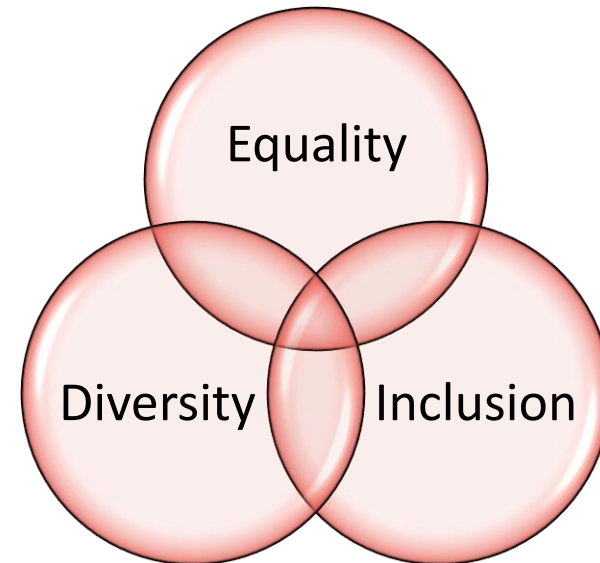
Doreen Tembo (*Strategic Lead*)



PEDRI Strategic Objectives



***"It's not about getting people to trust you; it's about demonstrating trustworthiness"
(Public Contributor)***



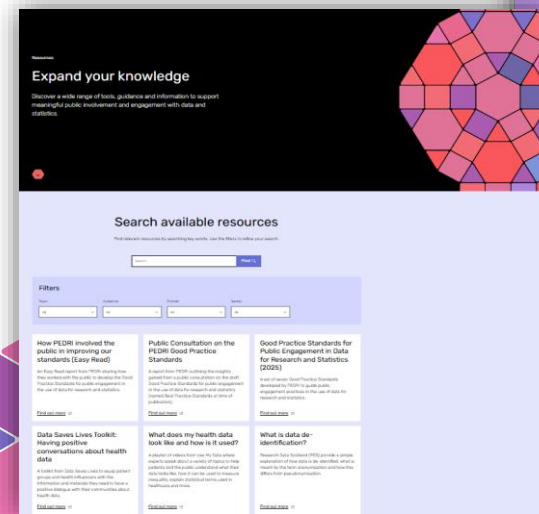
Key Achievements

Phase I

- Building a partnership and precedence for collaborative working in the field
- Developing PEDRI Good Practice Standards
- Identifying community needs and requirements for learning and development
- Pilot communications campaign focused on families
- Delivering a programme of community activities

Phase II

- Strategic expansion and community development
- Good practice standards: public pledge, adoption, funding call, accreditation and evaluation
- Website and resource hub
- Thought leadership and community approach to challenges
- co-developing resources/learning and knowledge-sharing events
- Cross-data domain research engagement and communications



Questions?



PEDRI





UK Health Data Research Alliance

Doreen Tembo (Interim Head of Alliance)

In the beginning....



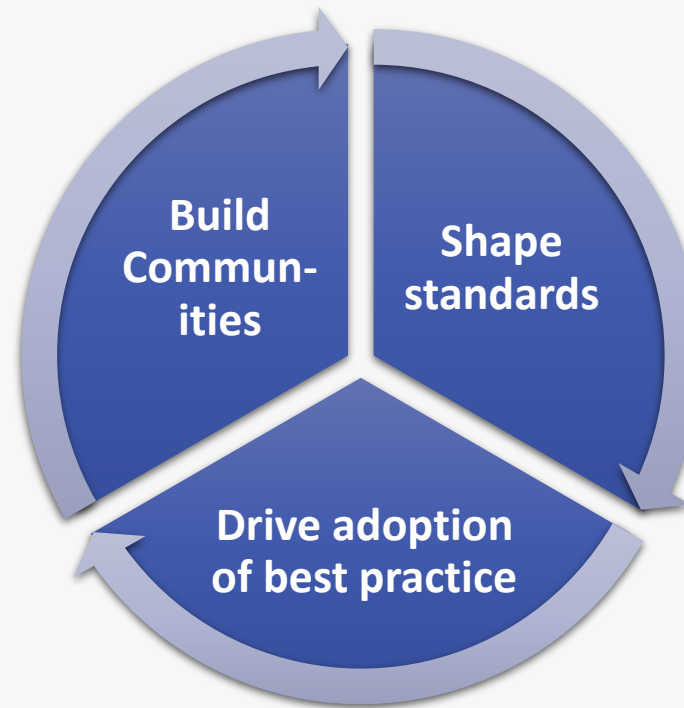
- Convened by HDR UK in Feb 2019, the Alliance was established through funding from **Innovate UK** as part of the **Digital Innovation Hub (DIH) programme**, to develop tools, processes and capabilities to help organisations unlock data-driven research and innovation.
- We launched with **9 founding members**:



What are we trying to achieve?

Our mission is to accelerate improvements in biomedicine, health and care by encouraging widespread and responsible use of health-relevant data for research and development.

- CONVENE
- SHARE KNOWLEDGE
- REDUCE DUPLICATION
- ALIGN



- AGREE ON BEST PRACTICE
- CO-DEVELOP STANDARDS
- PUBLISH RECOMMENDATIONS
- SHARE RESOURCES

- SUPPORT ORGANISATIONS
- FACILITATE IMPLEMENTATION
- INCENTIVISE CHANGE

Current Alliance workstreams and working groups

Trust & Transparency

- [Pan UK Data Governance Steering Group and Action Forces](#)
- [Public Engagement in Data Research Initiative \(PEDRI\)](#)
- Researcher Registry Information Governance & Policy Working Group

Data Standards

- [Data Officers Group](#)
- [OMOP Special Interest Group](#)
- [Diversity in Data Special Interest Group](#)
- [Clinical Trials Key Stakeholder Prioritisation Forum](#)

Technology Services

- Co-development of the [‘Enhanced Gateway’](#)
- Contribute to various communities convened by [DARE UK](#)

Capacity Building

- [Black Internship Programme](#)
- Support to development of new training and resources on the [HDR UK Futures Platform](#)

International communities with Alliance representation

QUANTUM – EU Horizon Programme

- **Background:** Data holders are expected to make their datasets available for secondary use, providing a notion of their quality and utility and the maturity of their data quality procedures. Article 56 proposes this would take the form of a label
- **Goal:** Developing and implementing a label mechanism that could be ideally adopted in the future HealthData@EU

What impact has the Alliance made?

Trust & Transparency

- Responding to the COVID-19 pandemic by enabling UK wide research through **harmonised data access**.
- Improving transparency in data use through the [Data Use Register Standard](#) and more recently access processes through the [Pan-UK Data Governance Steering Group Transparency Standards](#).

Data Standards

- Supporting **interoperability and useability of data** from standards on paper to standardised analytics:
- Publication of [Data Standards White Paper](#) in 2021, supporting the [EHDEN UK Data Partner call](#) in 2022, establishing [OHDSI UK](#) and the [Alliance OMOP SIG](#) in 2023 and more recently establishing the **Real World Evidence (RWE) Network** in 2024.

Technology Services

- Making data **Findable, Accessible, Interoperable and Reusable (FAIR)** through the Gateway by developing a [Metadata Specification](#) and encouraging alliance members to publish their datasets.
- Shaping policy and best practice for Trusted Research Environments (TREs) through the White Paper on [Principles and Best Practice for TREs](#).

Capacity Building

- Addressing the data science skills gap by encouraging Alliance members to become host organisations in the [Black Internship Programme](#).

UK TRE Community – Information Governance Interest Group

A complex network diagram with various sized nodes (circles) in blue, black, and grey, connected by thin grey lines. Some nodes are highlighted with larger concentric circles. The background is white with faint grey circles.

INFORMATION GOVERNANCE INTEREST GROUP



DARE UK

STRE

HELLO FROM THE CO-CHAIRS



KATHERINE
O'SULLIVAN
UNIVERSITY
OF SHEFFIELD



AMY TILBROOK
UNIVERSITY OF
EDINBURGH



FELIX RITCHIE
UNIVERSITY OF
THE WEST OF
ENGLAND



PETE BARNSELEY
THE FRANCIS
CRICK
INSTITUTE



YVONNE
ADEBOLA
PUBLIC MEMBER

WHY DO WE NEED AN INFORMATION GOVERNANCE INTEREST GROUP?



AIMS AND DELIVERABLES



**Putting Policy
Into Practice**



PLEASE JOIN US!

TRE-IG@JISCMAIL.AC.UK

**OUR FIRST EVENT:
26TH MARCH ONLINE**

HTTPS://LU.MA/NM27F056

Best Practice for Research Images (BESTIES)



BESTIES

Best Practice for Research Images

Funded by DARE UK Community Interest Groups 24-25

Group Info Page: <https://dareuk.org.uk/community-groups-listing/best-practice-for-research-imaging/>

Sign up here: <https://forms.office.com/e/acmtWfhFW8>



Image provided by Claire MacDonald

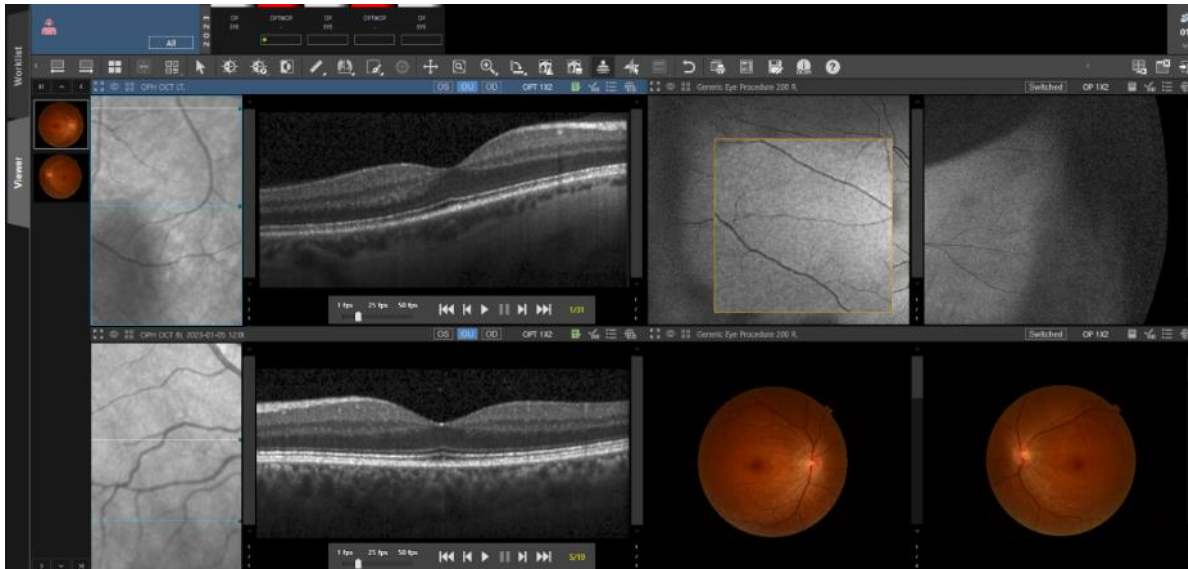


Image taken from Image Technology News: <https://www.itnonline.com/article/infinitt-showcase-new-products-enhancements-himss24>

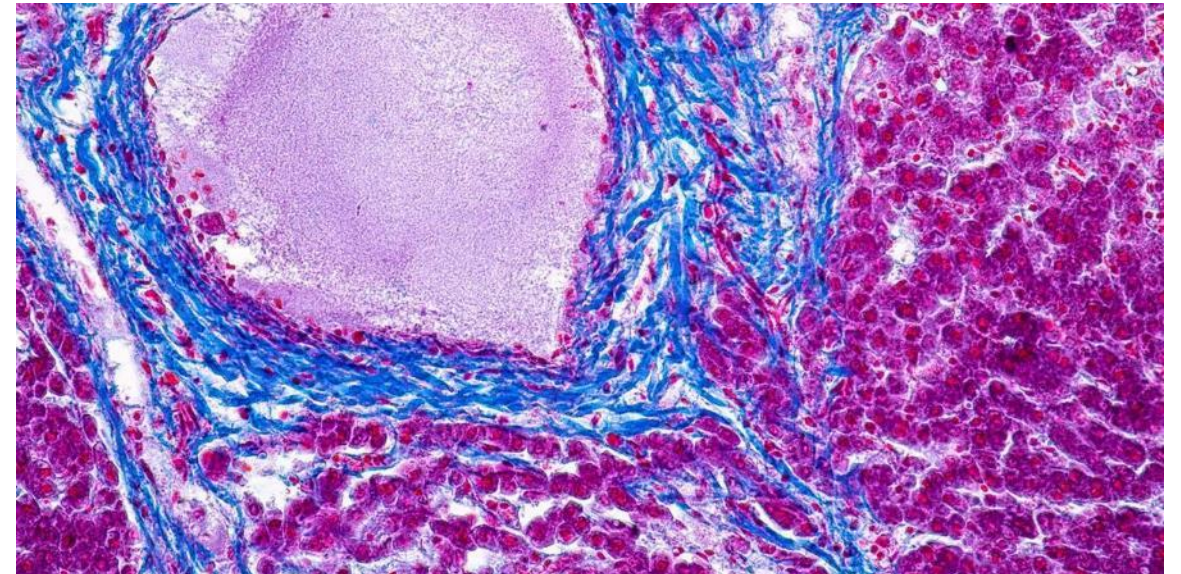


Image taken from Lab Manager: <https://www.labmanager.com/integrating-artificial-intelligence-with-digital-pathology-22148>

Digital Pathology

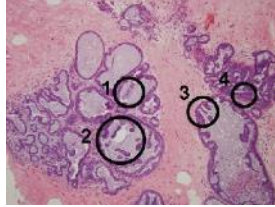


Image taken from University of Washington:
<https://homes.cs.washington.edu/~shapiro/digipath.html>

Ophthalmology PACS



Image taken from University of Edinburgh: <https://clinical-sciences.ed.ac.uk/edinburgh-imaging/research/themes-and-topics/body-systems/eyes-retinal>

Radiology PACS



Image taken from Radiology Café:
<https://www.radiologycafe.com/interview-application/career-in-radiology/>

Quality

Grade

Accuracy

Precision

Short-term outcomes:

- Generate ideas from participant discussions for areas of focus
- Create at least one working group
- Develop at least one BPR
- Produce a report on the analysis of work package outputs and recommendations for areas to develop best practice recommendations and test in future workstreams

Long term aims:

- To develop WGs which will explore further areas for focus. The WGs will conduct deeper explorations of the issues and how they should be addressed.
- Use the outputs from the WGs to generate best practice recommendations.

Group Co-Chairs



Claire MacDonald
Head of Clinical Data
Science
Manchester University
NHS Foundation Trust



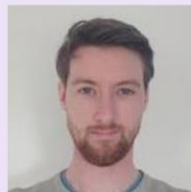
Dr Anthony Wilson
Group Chief Medical
Informatics Officer
(Research & Innovation)
Manchester University
NHS Foundation Trust



Steve Sweeney (Public
Representative)



Dr Steve Harris
Chief Research
Information Officer
University College London



Dr Nicholas Payne
Medical Physicist and
Research Associate
University of Cambridge



Dr Katie Wilde
Head of Digital
Research University of
Aberdeen



BESTIES

Best Practice for
Research Images

Sign up here:

<https://forms.office.com/e/acmtWfhFW8>



**BESTIES (BEST practice
for research Images)**

An Interest Group dedicated to those develop-
ing imaging pipelines for health and social care
research.

[Start now](#)

Standardised Architecture for Trusted Research Environments (SATRE)

Standard Architecture for Trusted Research Environments



<https://satre.uktre.org> satre-contact@dundee.ac.uk

What are we doing?

Maintaining our best-practice guide to building and operating Trusted Research Environments (TREs)

Finding a sustainable model for SATRE:

- Governance
- Formal accreditation
- Extending SATRE

Who benefits?

Public: Better understanding of what's happening with your data

TRE operators & developers: more sharing of knowledge and technology

Users: More consistency amongst TREs

Get involved



<https://uktre.org>



Safe Data Access Professionals

<https://securedatagroup.org>

Join a collaboration café

Secure Data Access Professionals (SDAP)

An Introduction to SDAP

Leigh Tate – UK Data Service



Safe Data Access Professionals



Economic
and Social
Research Council



Co-chairs

Dr James Scott

UK Data Service



Safe Data Access Professionals

Leigh Tate

UK Data Service





Safe Data Access Professionals

Our purpose

To facilitate the sharing of expertise, good practice and knowledge between those working In Trusted Research Environments

To support collaboration across the Secure Data landscape, intended to drive innovation and service development



Safe Data Access Professionals

Our members

Membership from over 40 organisations, representing the day-to-day management or administration of a Safe Data setting

Working in collaboration with other Data Community networks and Interest Groups to broaden our reach and impact



Safe Data Access Professionals

Our events and resources

Quarterly online events, with presentations from guest speakers on a wide range of community-led topics

A suite of online resources (such as a Statistical Disclosure Control handbook and competency framework for staff working in a Safe Setting) available at securedatagroup.org

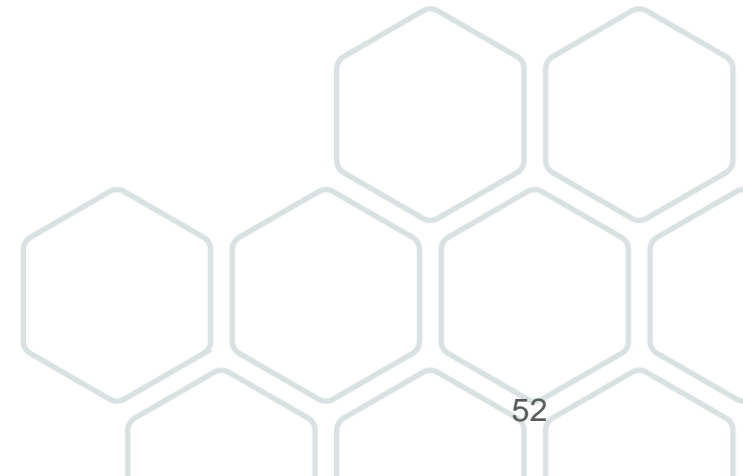
Register to join SDAP

securedatagroup.org/membership



Safe Data Access Professionals

Thank you



International Secure Data Facility Professionals Network (ISDFPN)

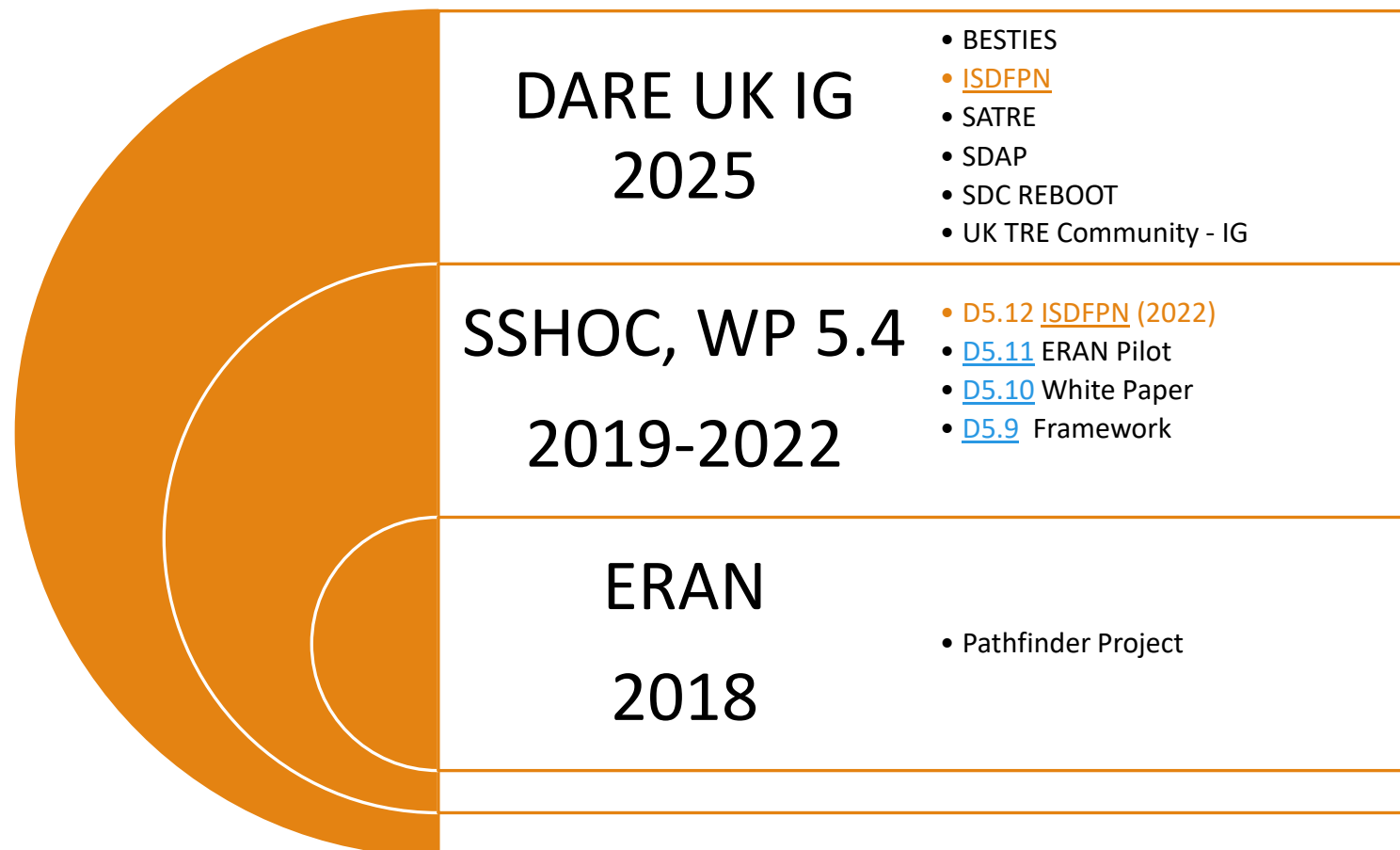
A new endorsed DARE UK Interest Group: ISDFPN - The International Secure Data Facility Professionals Network

Beate Lichtwardt (UKDS), Sharon Bolton (UKDS), Kristi Winters (GESIS)
Co- and Deputy Chairs ISDFPN

DARE UK Community Groups: Strengthening Collaborations, Driving Impact.
Online, 24 February 2025



ISDFPN - The story



ISDFPN – Topical Network Events

- 3 Events/year
- 2 Talks/event
- Online
- **Next event:**

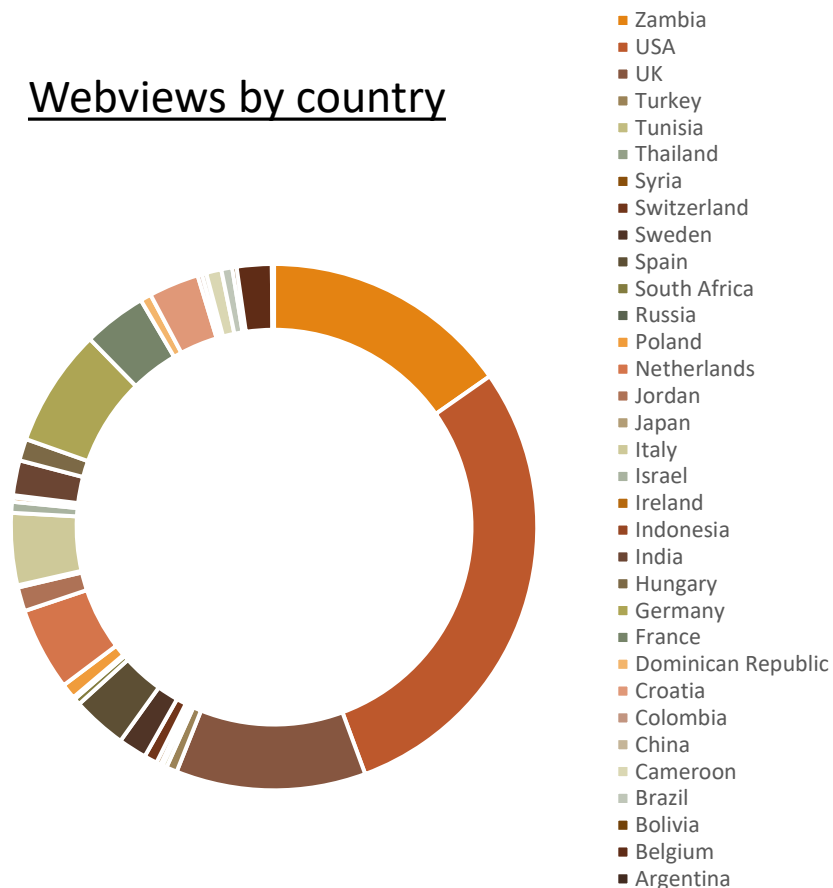
05 March 2025

| Presentation 1 | Presentation 2 |
|--|---|
| International Secure Data Facility Professionals Network (ISDFPN) | Mind the Skills Gap: Creating Capacity for Data Access. SDAP: Competency Framework |
| Certifying reproducibility with confidential data: first results from the French cascadi/Casdi cooperation | Data Sharing with RDC Qualiservice |
| Enabling Access to Confidential Qualitative Data through Data Enclaves | Building a Safe Researcher Accreditation Scheme |
| Researcher Passport: A digital user credential for accessing restricted data | Introducing the SafePoints |
| SANE: an off-the-shelf, data holder-agnostic TRE | Output Disclosure Control for Qualitative Data in Trusted Research Environments: Current State and Next Steps |
| Setting up Remote Access to Sensitive Data (when things don't quite go to plan...) | Making secure qualitative data available via TREs |

ISDFPN – Some facts

- 30 Individual members
- 20 Organisations
- 9 Countries

Webviews by country



ISDFPN Zenodo Community Space

- Event presentations
- Other resources

Presentations and Publications about ISDFPN

- WCQR
- IASSIST
- ESRA
- UKDS Impact Blog
- IASSIST Quarterly
- SSHOC Zenodo

Thank you!

If you would like to join the ISDFPN, offer a talk or request more information regarding the Network, please email isdfpn@ukdataservice.ac.uk.

<https://ukdataservice.ac.uk/about/research-and-development/international-data-access-network-idan/>

<https://dareuk.org.uk/community-groups-listing/international-secure-data-facility-professionals-network/>

Synthetic Data Working Group

DARE UK Community Group

Plans for the UK Synthetic Data Community Group

Find out more: www.syntheticdata.uk



UK Synthetic Data
Community Group

Meet the Co-Chairs



Lewis Hotchkiss
Dementias Platform UK



Emma Squires
Dementias Platform UK



Simon Thompson
Dementias Platform UK,
SAIL Databank, SeRP



John Gallacher
Dementias Platform UK



Tim Rittman
University of Cambridge



Emily Oliver
Administrative Data
Research UK



Cristina Magder
UK Data Service



Fiona Lugg-Widger
Centre for Trials Research



Robert Trubey
Centre for Trials Research



Sophie McCall
Research Data Scotland



Anmol Arora
University College London



Steve Moore
Public Representative

Current Landscape



Lewis Hotchkiss



DPUK/SeRP Synthetic Data
Working Group



Emily Oliver



ADR UK Synthetic Data
Working Group



Sophie McCall



Scottish Synthetic Data
Working Group



Cristina Magder



Data providers' perspectives of
low-fidelity synthetic data
Project



Fiona Lugg-Widger



Public attitudes to the use of
low-fidelity synthetic data
Project



Robert Trubey

DPUK/SeRP Synthetic Data Work



Dementias Platform UK has developed several tools and processes for the generation and evaluation of synthetic data and are now working towards the practical implementation of these in various scenarios.

Using **Synthetic Data** in Practice

Dementias Platform UK is working on a number of projects for the practical implementation of synthetic data within and outside of our Trusted Research Environment.



Creating “Synthetic Data TREs”

DPUK along with the **SAIL Databank** are developing “Synthetic TRE” versions of themselves to enable greater access to data with lower governance controls and restrictions.



Data Federation with ADDI

We are working with **ADDI** to deploy data federation to enable federated queries across TREs. Synthetic data helps in this scenario where the actual data cannot be seen.



Enabling Researcher/Student Training

We are working on releasing synthetic datasets for researcher and student training in health data research.

The Need for Synthetic Data across DARE UK Projects



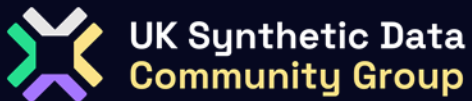
AI Risk Evaluation Group



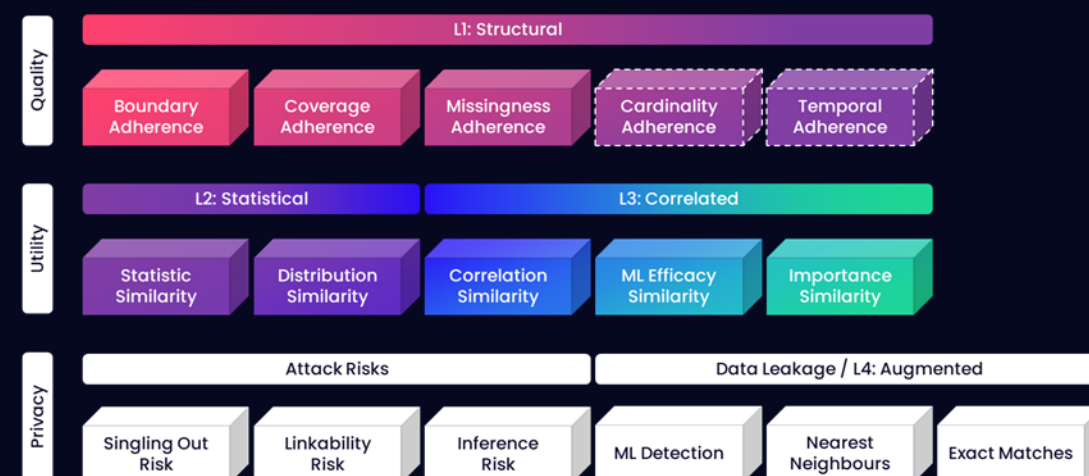
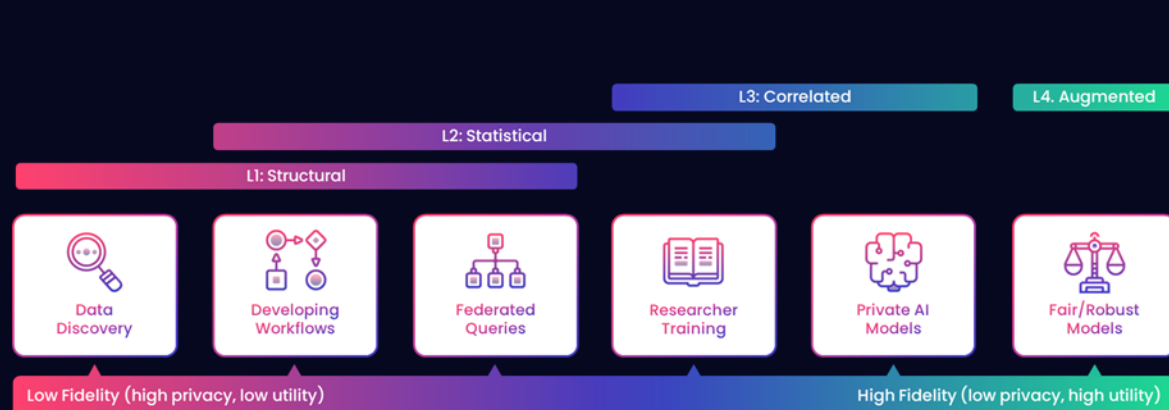
DARE UK Federation
TRE-FX



SDC-REBOOT Group (Tools
for AI Disclosure Control)



DPUK/SeRP Synthetic Data Work



Aims & Objectives

1

Host a series of workshops to discover solutions for the deployment of synthetic data in Trusted Research Environments.

2

Develop standards for the evaluation of quality, utility and privacy in synthetic data

3

Develop and refine “SynthOpt”, a community tool for the generation and evaluation of synthetic data at various levels

4

Create learning resources and guides to help researchers and data owners understand synthetic data and its uses

5

Put together a governance framework for Trusted Research Environments to be able to use synthetic data in practice



UK Synthetic Data
Community Group



Workshops

Researchers

Understanding user requirements and use cases for different levels of fidelity of synthetic data.

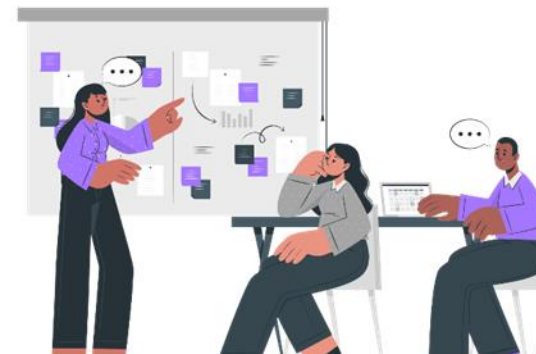
April



Experts

Developing tools and setting standards for the generation and evaluation of synthetic data.

June



Data Owners

Exploring issues such as data ownership, transparency and communication.

August



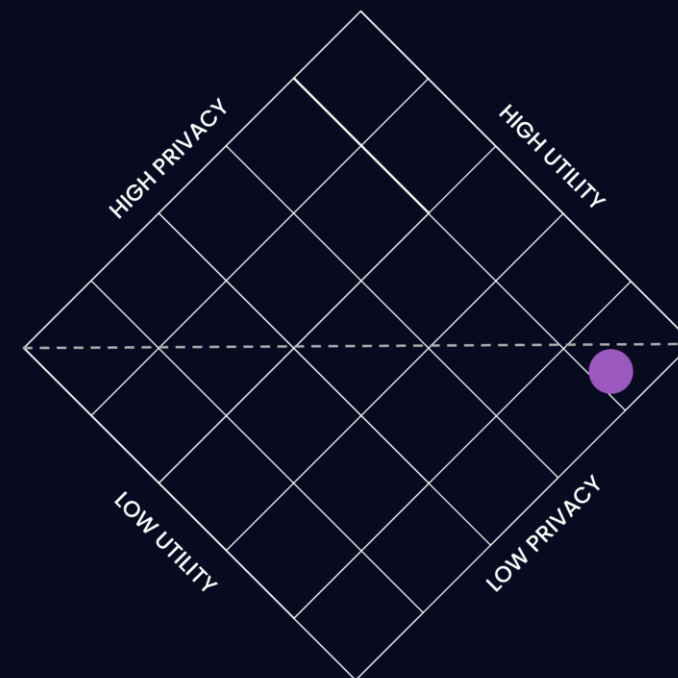
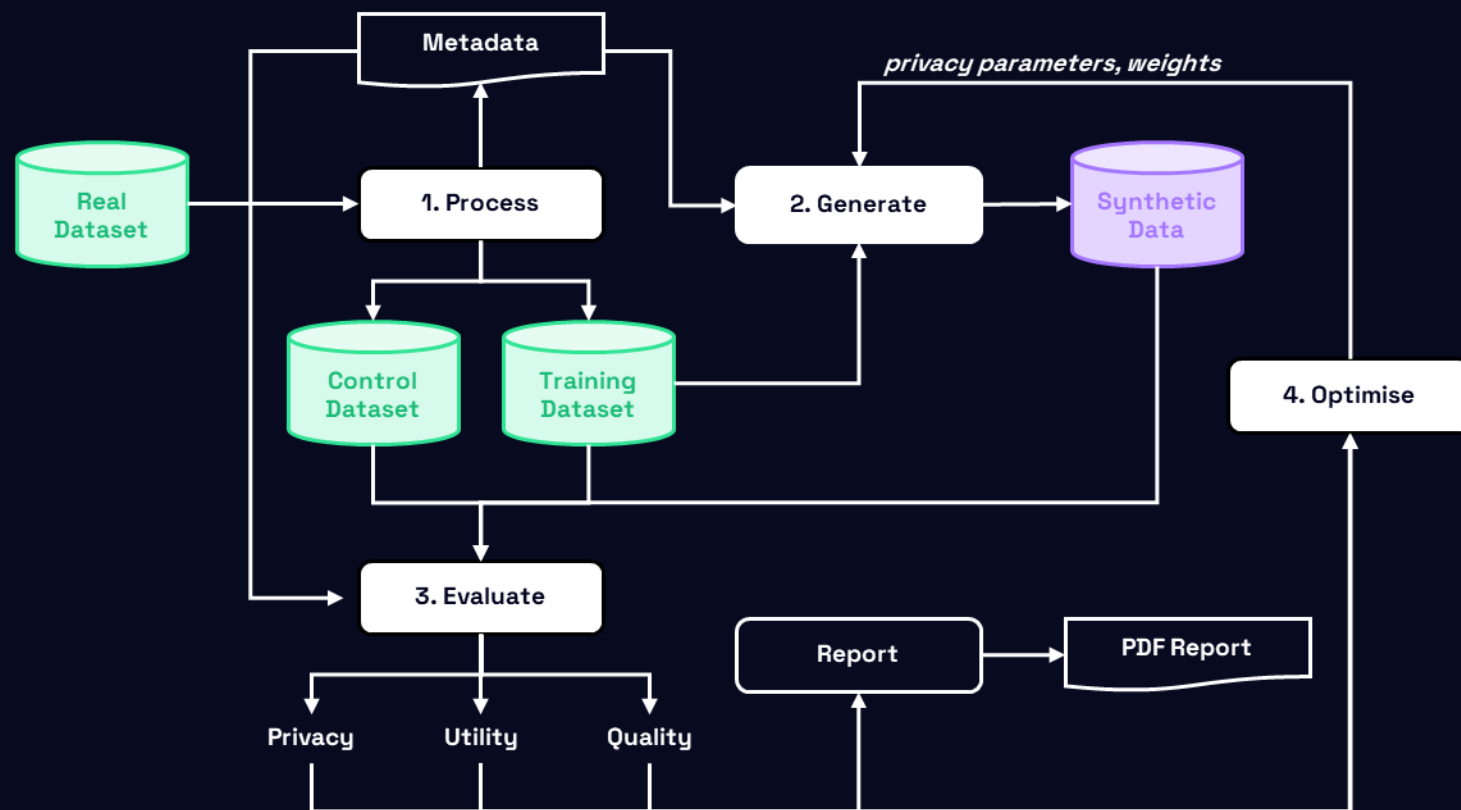
Public

Ensuring synthetic data is used for the public good and protects privacy sufficiently.

October



Community Tools



Community Tools

Synthetic Data Evaluation Report

This report details the quality, privacy and utility evaluation metrics gained from the synthetic data, and visualisations to help interpret them.

Metrics Summary

| Privacy Metrics | Score | Quality Metrics | Score | Utility Metrics | Score |
|----------------------|-------|--------------------|-------|----------------------|-------|
| Exact Matches | 1.0 | Boundary Adherence | 1.0 | Statistic Similarity | 0.97 |
| Detection | 0.24 | Coverage | 0.87 | Correlation | 0.91 |
| Inference Protection | 0.04 | Complement | 0.89 | ML Efficacy | 0.0 |
| Singling Risk | 0.16 | nan | nan | nan | nan |
| Linkability Risk | 0.04 | nan | nan | nan | nan |
| Inference Risk | 0.05 | nan | nan | nan | nan |

Synthetic Data Categorisation Level: Correlated Synthetic Data

Correlated Synthetic Data is categorised as the highest risk due to capturing information about relationships and patterns between variables. Therefore, the privacy metrics should be evaluated carefully to ensure individuals aren't at risk of being identifiable.

What are the Synthetic Data Categorisation Levels?

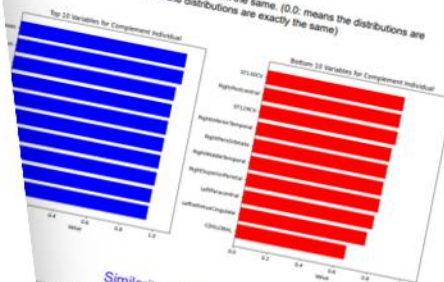
Synthetic data exists on a spectrum of low to high fidelity depending on how similar it is to the real data. We can categorise these levels of fidelity as below:

- Level 0 (Random Synthetic Data)**
Values which are randomly generated, without using the real data or metadata.
- Level 1 (Metadata Synthetic Data)**
Random data which is generated based on real metadata such as data types, value ranges etc.
- Level 2 (Structural Synthetic Data)**
Generated by a synthesiser to mimic the structure of the real data, but without capturing the relationships between attributes.
- Level 3 (Statistical Synthetic Data)**
Roughly keeps the same summary statistics such as mean, median, standard deviation etc.
- Level 4 (Correlated Synthetic Data)**
Relationships and correlations between variables are captured.
- Level 5 (Augmented Data)**
Real data is adjusted or nearest neighbours is used to create highly realistic data points which are just slightly different to the real data.

Example Distribution Comparisons

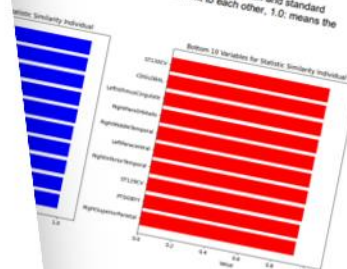
Complement Scores

Complement measures whether the distributions look the same. (0.0: means the distributions are as different as they can be, 1.0: means the distributions are exactly the same)



Similarity Scores

Similarity scores how similar the summary statistics are such as mean and standard deviation. (0.0: means the summary statistics are extremely different to each other, 1.0: means the summary statistics are exactly the same)



Meaning of Metrics

(Privacy) Exact Matches

This metric measures whether each row in the synthetic data is novel, or whether it exactly matches an original row in the real data.

(best) 1.0: The rows in the synthetic data are all new. There are no matches with the real data.
(worst) 0.0: All the rows in the synthetic data are copies of rows in the real data.

(Privacy) Detection

This metric measures how difficult it is to tell apart the real data from the synthetic data using a detection algorithm. A score of 1 may indicate high quality but it could also be a clue that the synthetic data is copying the rows in the real data.

The synthetic data apart from the real data, is not easily synthetic data apart from the real data.

is to infer real, sensitive values. It is assumed that the synthetic data is not real data; they will combine it with the synthetic data.

OK. The attacker is not able to correctly guess the attack algorithm.
The attacker is able to correctly guess the attack algorithm.

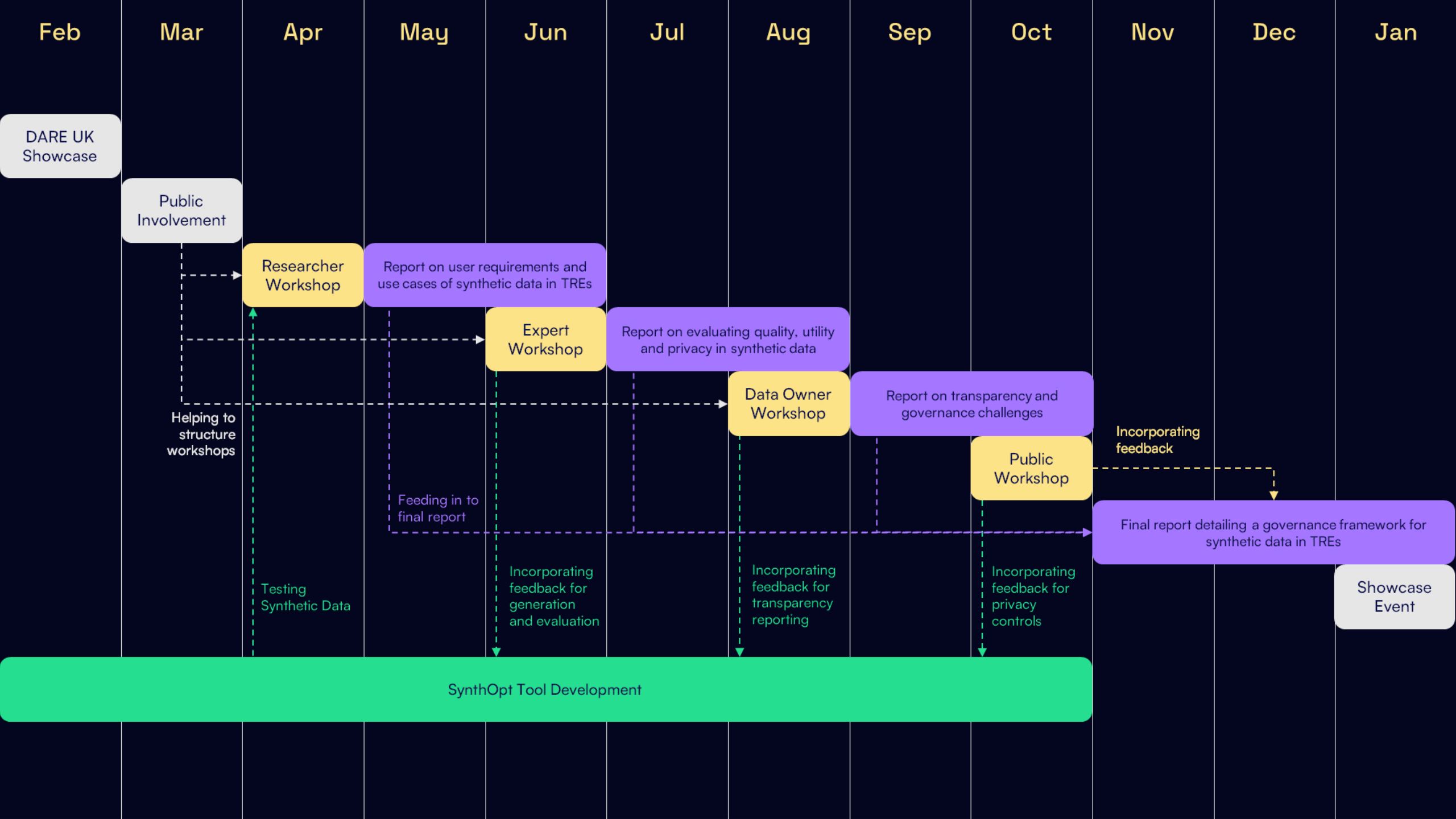
data can help an attacker finding a combination of data. This attack evaluates the robustness of the data attribute which single out an individual.

can be singled out by a unique combination of data.
can be singled out by a unique combination of their data.

etic data will help an adversary who tries to link two other datasets.
For example, suppose that the adversary finds dataset A on about the profession and education of people, and (and health related information. Can the attacker use the data? (It is assumed the attacker knows the key fields of the different datasets.)



UK Synthetic Data
Community Group



Upcoming Events



**UK Synthetic Data
Community Group**

Save the Date! - Researcher Workshop
Understanding user requirements and use cases of different types of synthetic data in sensitive data research.

 **9th April, 2025, 10:00 - 15:00**
 **Doubletree by Hilton, Bristol**

Register for your free ticket via our website.
We are also able to cover up to £75 for travel!

www.syntheticdata.uk/workshop-registration



**DEMON Network &
Dementias Platform UK
Synthetic Data for Dementia
Research ECR Workshop**

Attend expert talks and workshops on the applications of synthetic data in dementia research — from mitigating bias and privacy issues in data, to enabling federation. Plus, gain hands on experience with generating and evaluating synthetic data on datasets within the DPUK Data Portal.

Register Now!

2nd & 3rd of April 2025
Zoom, Online



DARE UK Community Group

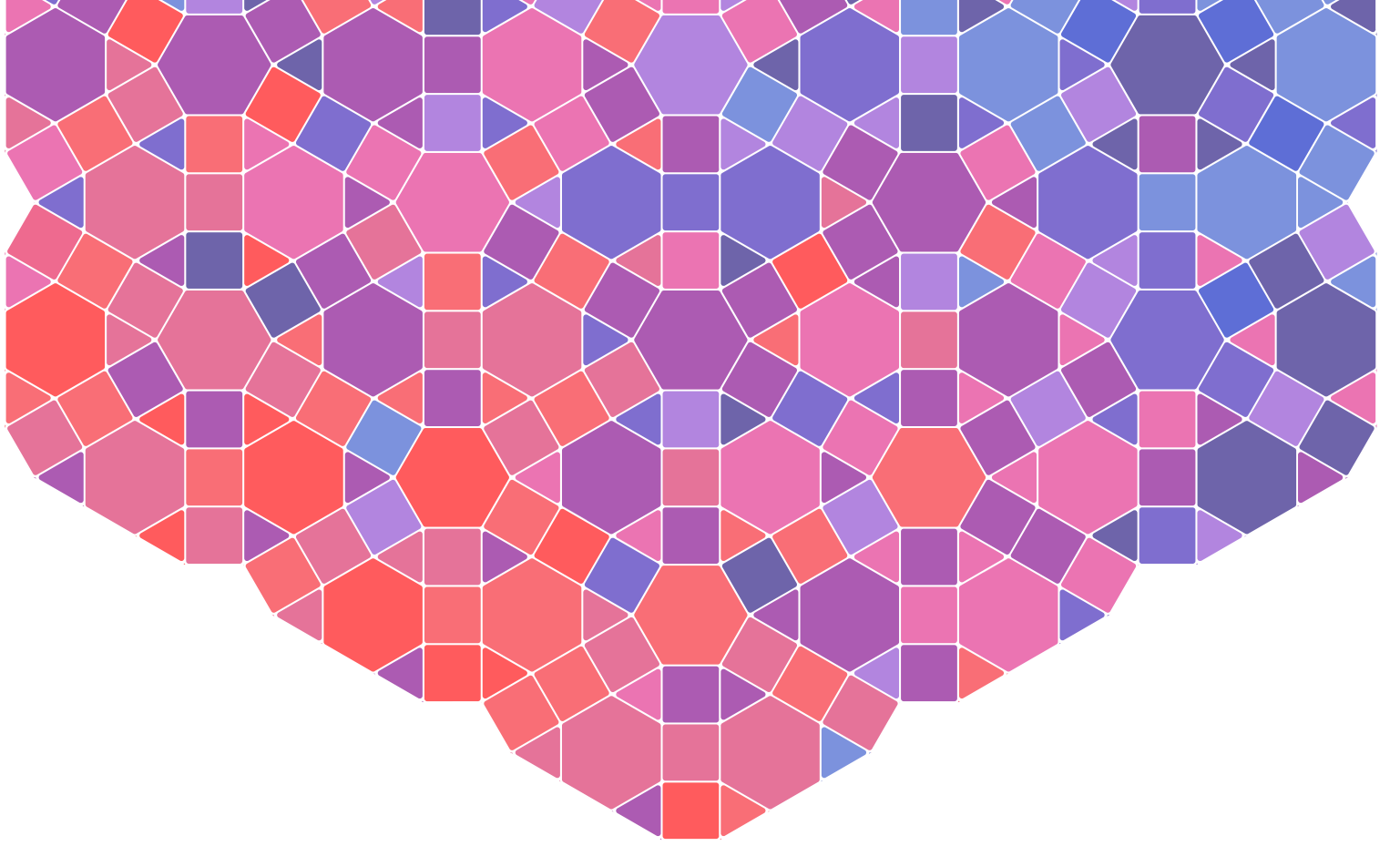
Plans for the UK Synthetic Data Community Group

Find out more: www.syntheticdata.uk



UK Synthetic Data
Community Group

PEDRI PIE Good Practice Standards Evaluation and Adoption Working Group



Good Practice Standards

Adoption and Evaluation Working Group

Samaira Khan

Senior Partnerships and Operational Manager



Our seven Good Practice Standards for public involvement and engagement in data research



Equity, diversity and inclusion

Ensure representation of people from different backgrounds.



Data literacy and training

Empower the public to understand and contribute.



Two-way communication

Enable everyone to have open, honest, and clear conversations.



Transparency

Project information is freely accessible for discussions with the public.



Mutual benefit

There is benefit to everyone involved.



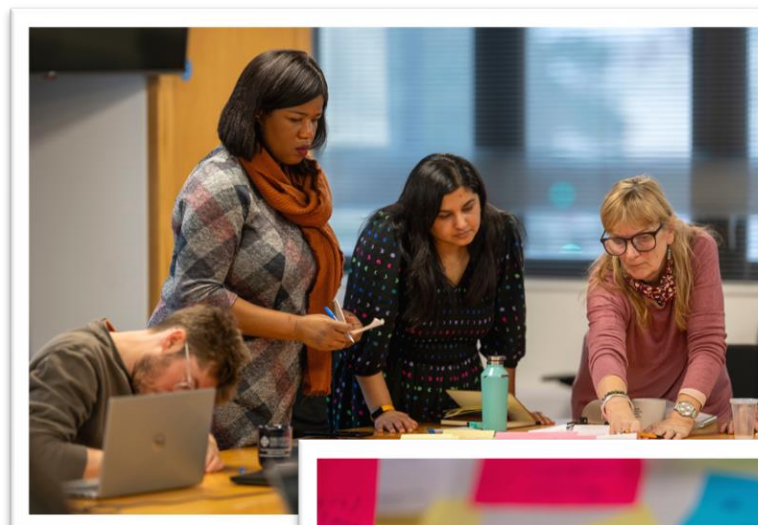
Effective involvement and engagement

There are clear tasks, purpose and impacts that are not tokenistic.



Creating a culture of involvement and engagement

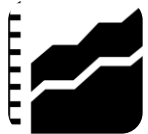
Public involvement and engagement is embedded into ways of working.



PEDRI

Upcoming Plans

Impact Specialist Project Officer



Manage, develop and support implementation of an **evaluation tool for PEDRI GPS**



Stakeholder consultations and workshops



Launch GPS Funding Call



Frontier meeting for PEDRI GPS, engaging executives and leaders in the field



Support exploration and creation of accreditation system for GPS.



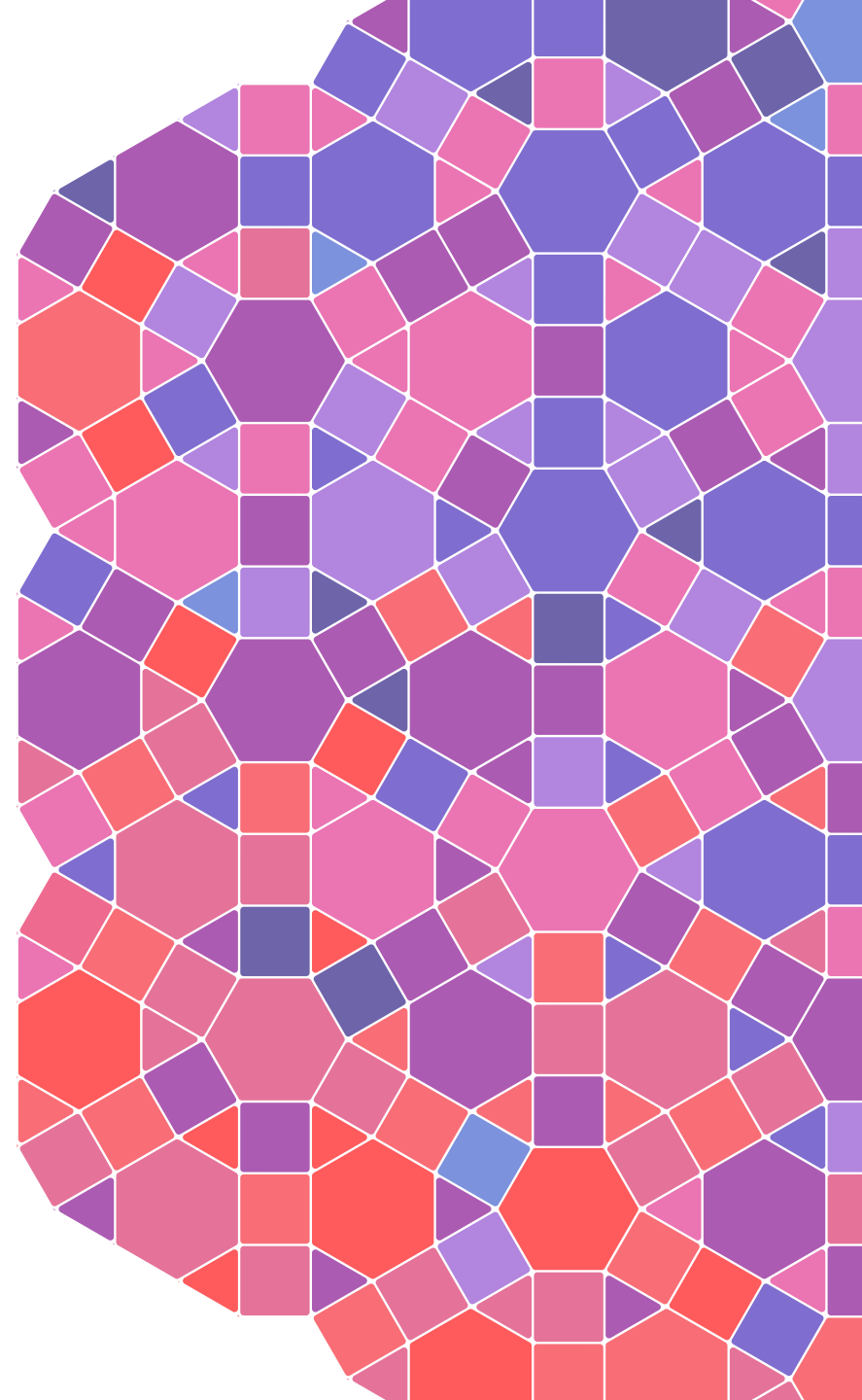
PEDRI

Stay Connected & Get Involved

contact@pedri.org.uk

www.pedri.org.uk

[Sign up to our bulletin](#)



Stay in touch!



Subscribe to our newsletter

[Click here to subscribe](#)



Visit our website

www.dareuk.org.uk

Follow us



DARE UK



@DARE_UK1

Stay in touch! – QR codes

Visit our website



Subscribe to our
newsletter



Follow us on
LinkedIn



Follow us on X
(Formerly Twitter)

