



DARE UK Real-world Research Exemplar Programme

Applicant Webinar

30 September 2025

UK Research
and Innovation

HDRUK
Health Data Research UK



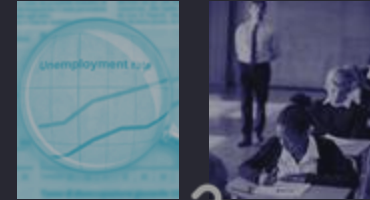
ADRUK
Data-driven change



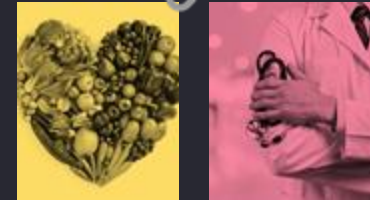
Agenda

- Background on DARE UK and Phase 2
- TRevolution
- Funding Opportunity Details
- Importance of Public Involvement and Engagement
- Questions

Sensitive data: affecting people, communities, and populations...



Data linkage: safely connecting sensitive data to benefit people, communities and populations...

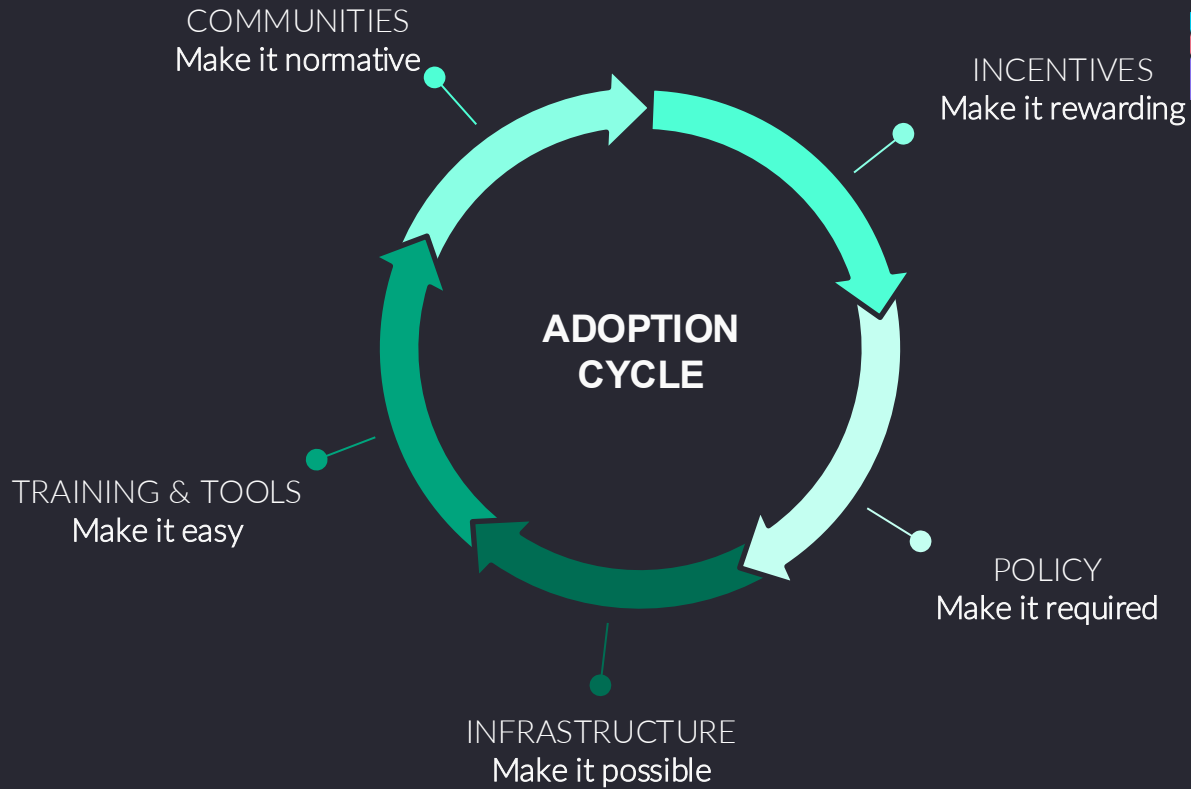


Vision

For all research and innovation to benefit from seamless, secure use of diverse sensitive data, at a pace, efficiency and scale approaching that of the open data ecosystem, that revolutionises research productivity and accelerates research to deliver public good

Mission

To put the UK at the forefront of sensitive data research and innovation by assembling the tools, technologies and standards needed to streamline secure data linkage and use



*Adapted by Neil Chue Hong from
original by Brian Nosek: Strategy
for Culture Change (2019)*

Vision

For all research and innovation to benefit from seamless, secure use of diverse sensitive data, at a pace, efficiency and scale approaching that of the open data ecosystem, that revolutionises research productivity and accelerates research to deliver public good

Mission

To put the UK at the forefront of sensitive data research and innovation by assembling the tools, technologies and standards needed to streamline secure data linkage and use

**Phase 1:
Design & Dialogue**

July '21 – March '24

£7.5m

**Phase 2:
Build, Test & Establish**

August '24 – March '27

£20.0m

**Phase 3:
Deliver, Optimise & Federate**

TBC

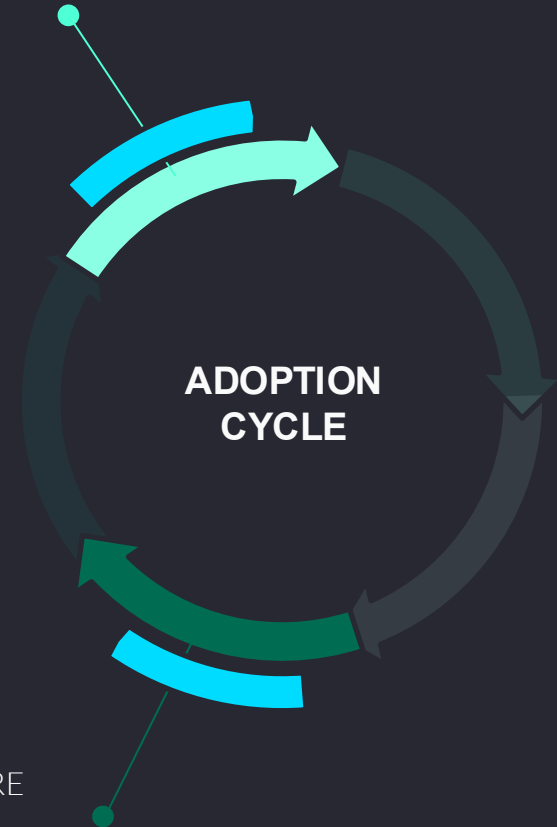
 Phase 1:
Design & Dialogue

July '21 – March '24

£7.5m

COMMUNITIES
Make it normative

INFRASTRUCTURE
Make it possible



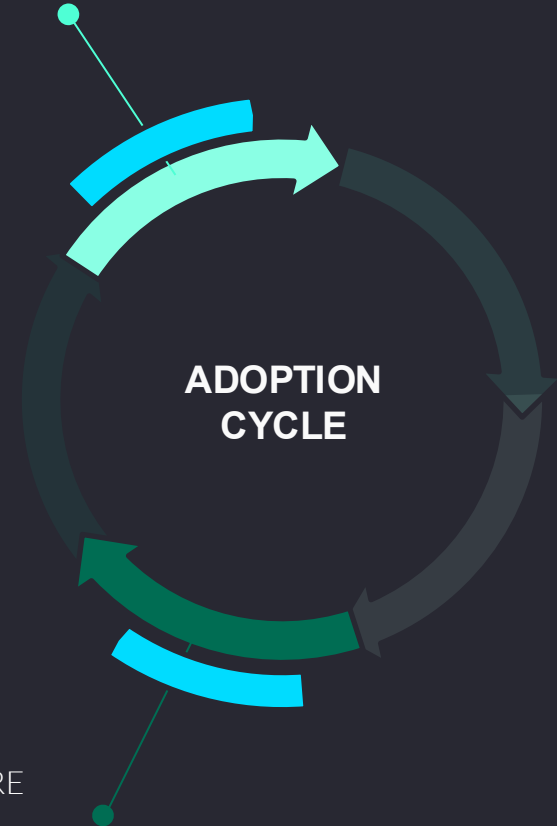
- Two landscape reviews
 - [Initial review](#)
 - [Infrastructure review](#)
- Two portfolios of funded projects
 - [9x Sprint Exemplars](#)
 - [5x Driver Projects](#)
- [Phase 1 recommendations report](#)
- [UK-wide public dialogue](#)
- [Community building initiatives](#)
- [Draft of a federated architecture blueprint](#)



UK Research
and Innovation




COMMUNITIES
Make it normative



INFRASTRUCTURE
Make it possible

 Phase 1

 Phase 2:
Build, Test & Establish

August '24 – March '27

£20.0m



UK Research
and Innovation

HDRUK
Health Data Research UK



COMMUNITIES
Make it normative



TRAINING & TOOLS
Make it easy

INFRASTRUCTURE
Make it possible

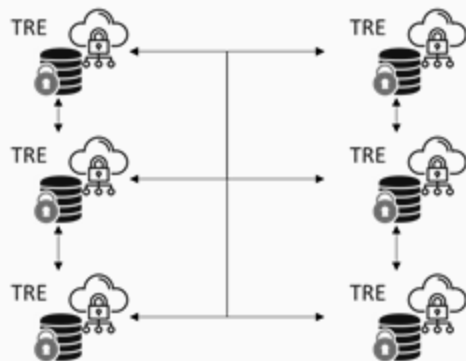
**ADOPTION
CYCLE**

Intra-TRE Capabilities



&

Inter-TRE Capabilities



COMMUNITIES
Make it normative



TRAINING & TOOLS
Make it easy

INFRASTRUCTURE
Make it possible

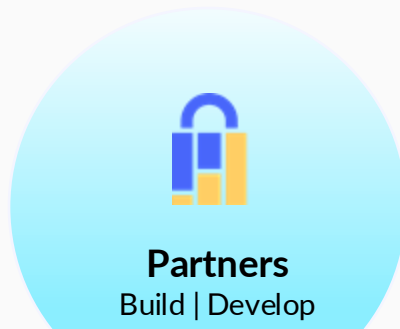
**ADOPTION
CYCLE**



Partners
Build | Dev

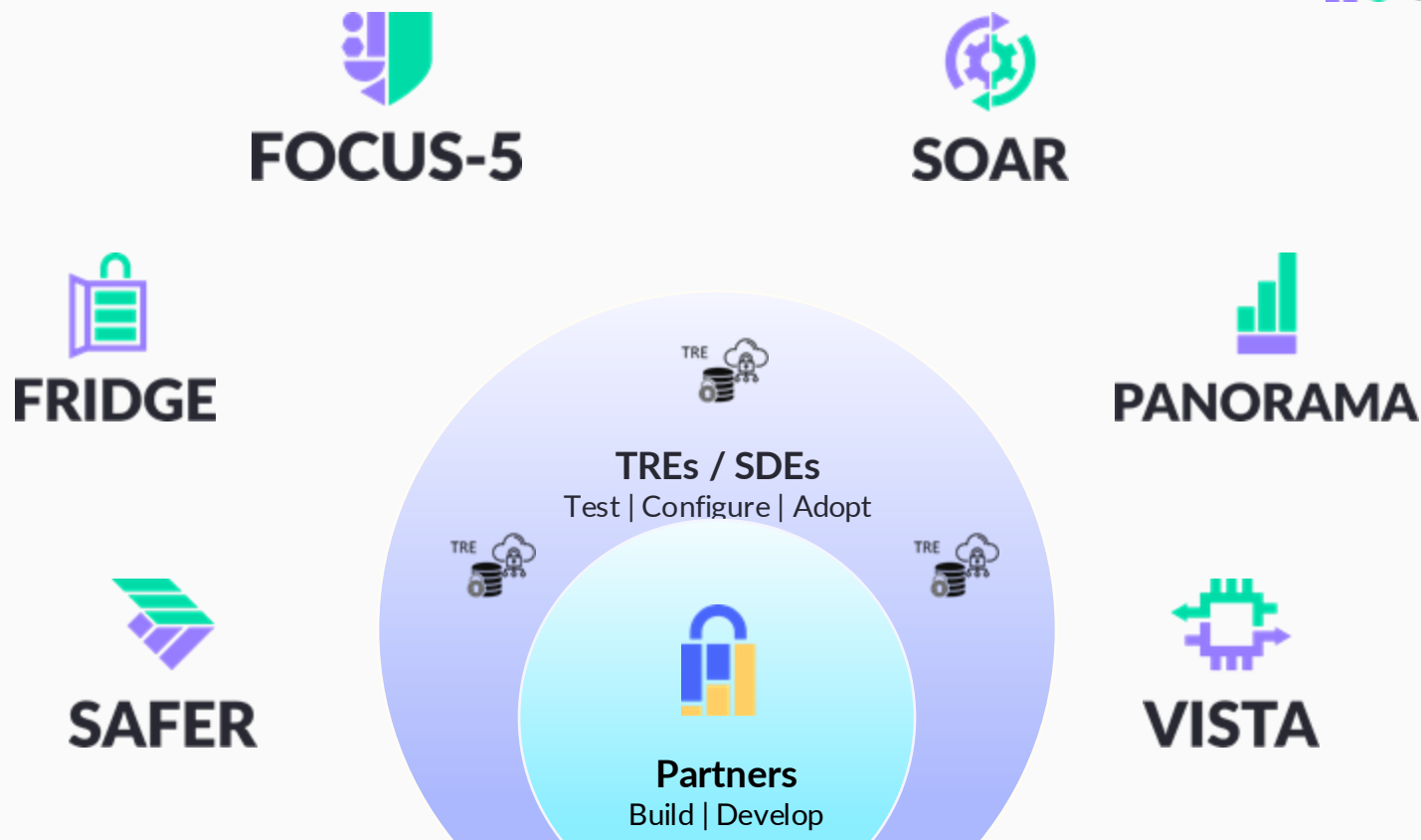
Mission

To put the UK at the forefront of sensitive data research and innovation by assembling the tools, technologies and standards needed to streamline secure data linkage and use



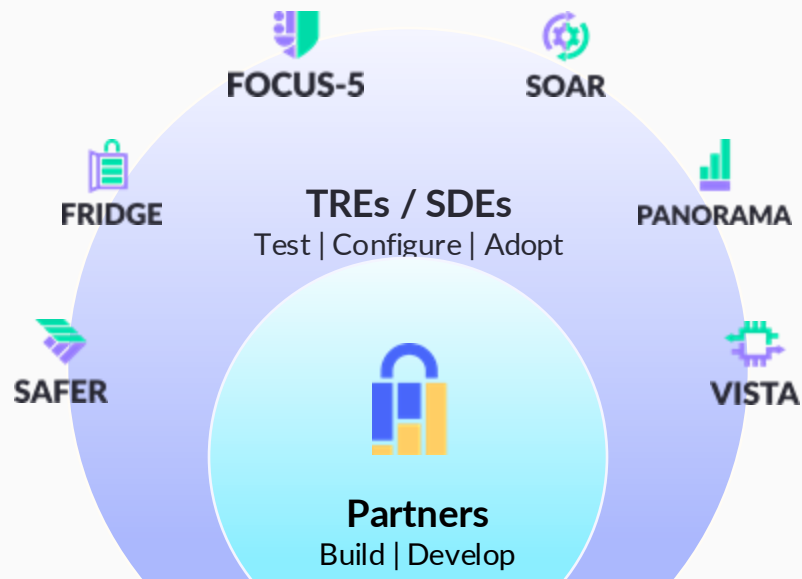
Mission

To put the UK at the forefront of sensitive data research and innovation by assembling the tools, technologies and standards needed to streamline secure data linkage and use



Mission

To put the UK at the forefront of sensitive data research and innovation by assembling the tools, technologies and standards needed to streamline secure data linkage and use



Mission

To put the UK at the forefront of sensitive data research and innovation by assembling the tools, technologies and standards needed to streamline secure data linkage and use



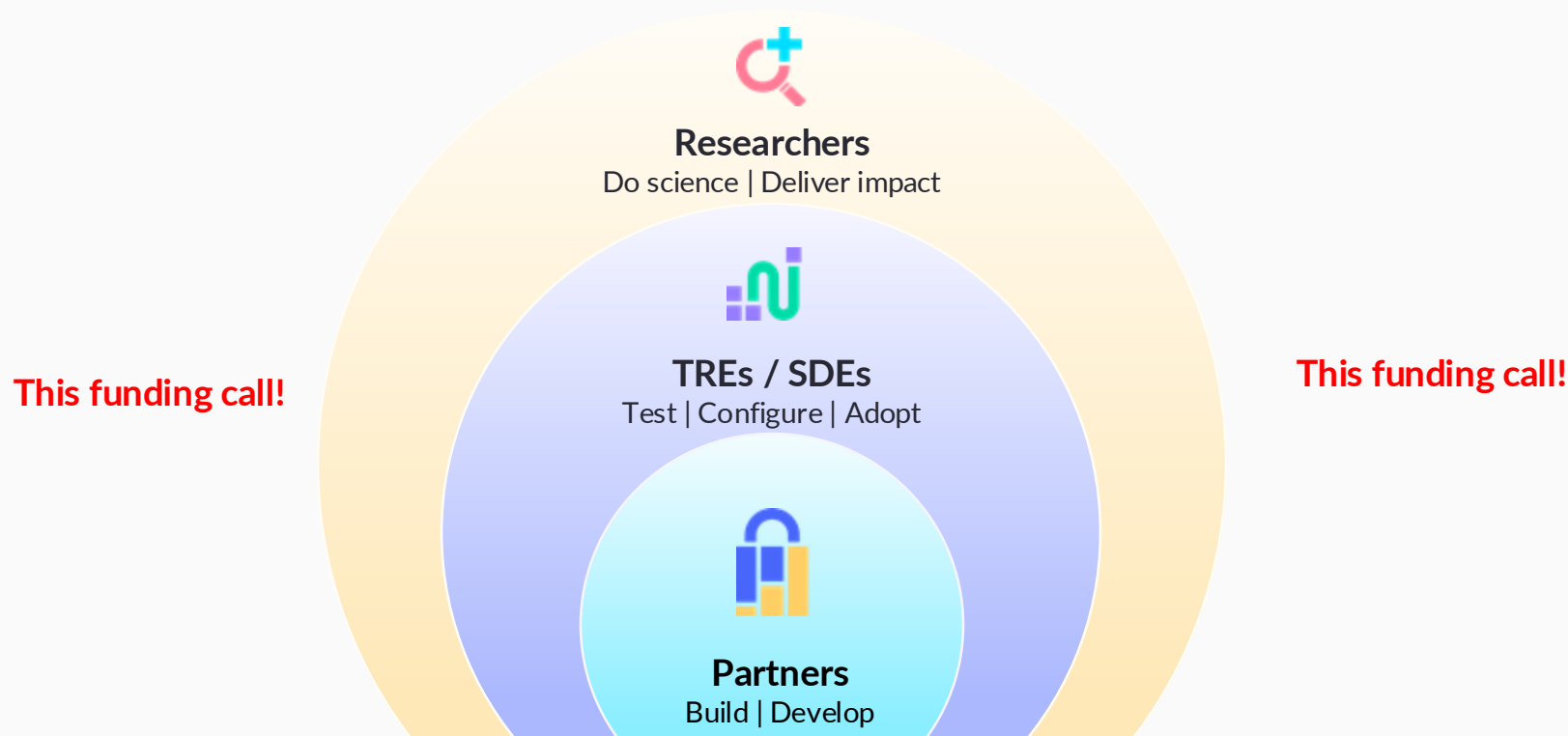
Mission

To put the UK at the forefront of sensitive data research and innovation by assembling the tools, technologies and standards needed to streamline secure data linkage and use



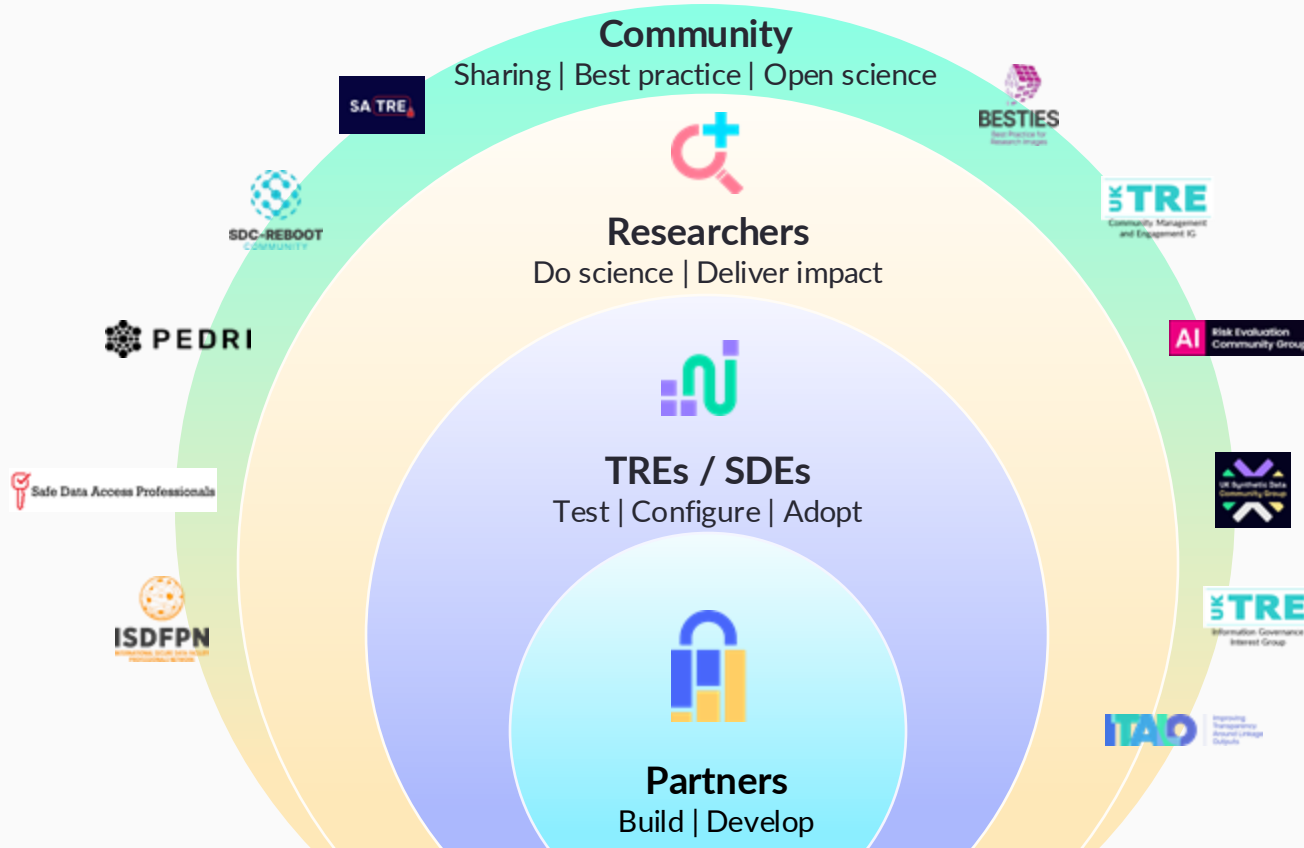
Mission

To put the UK at the forefront of sensitive data research and innovation by assembling the tools, technologies and standards needed to streamline secure data linkage and use



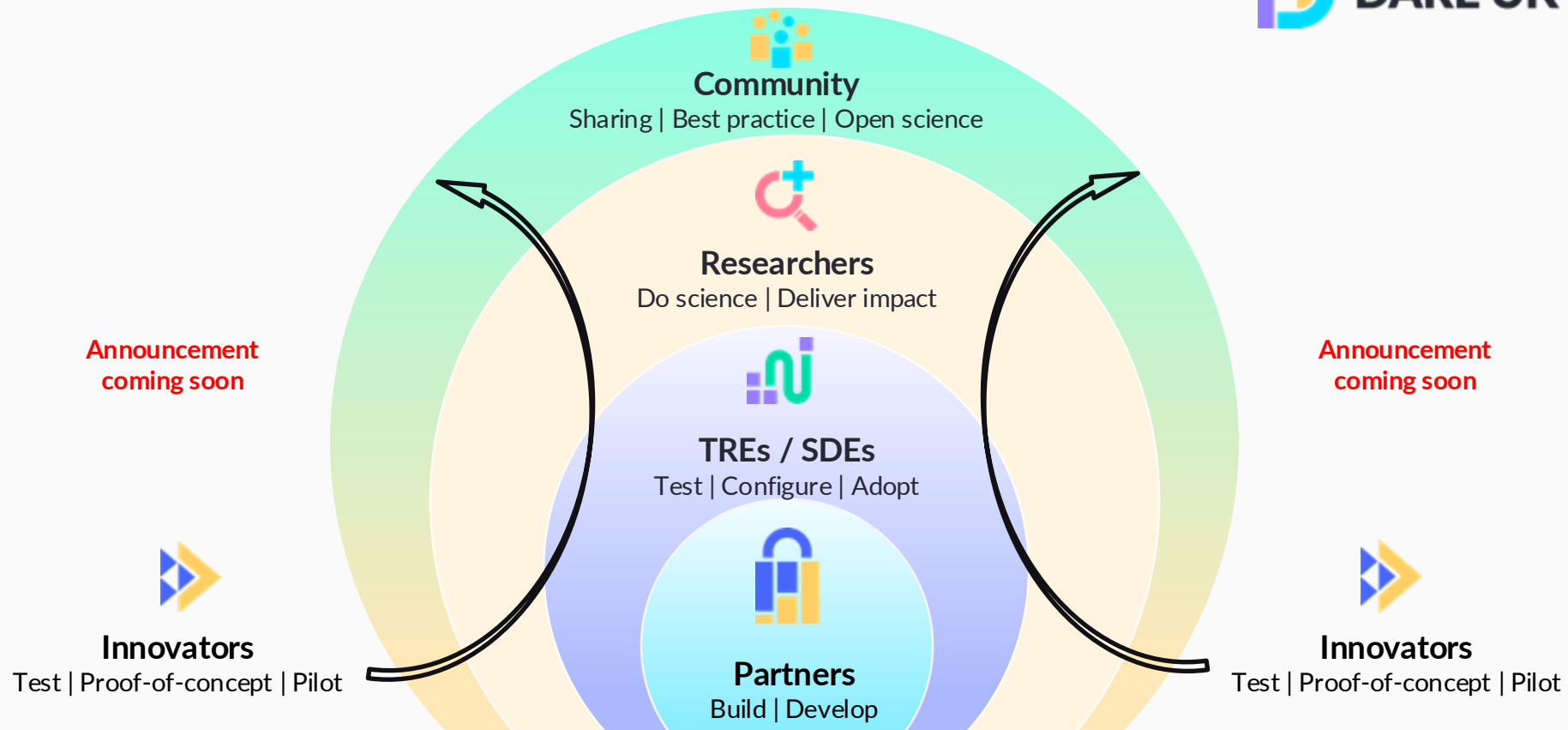
Mission

To put the UK at the forefront of sensitive data research and innovation by assembling the tools, technologies and standards needed to streamline secure data linkage and use



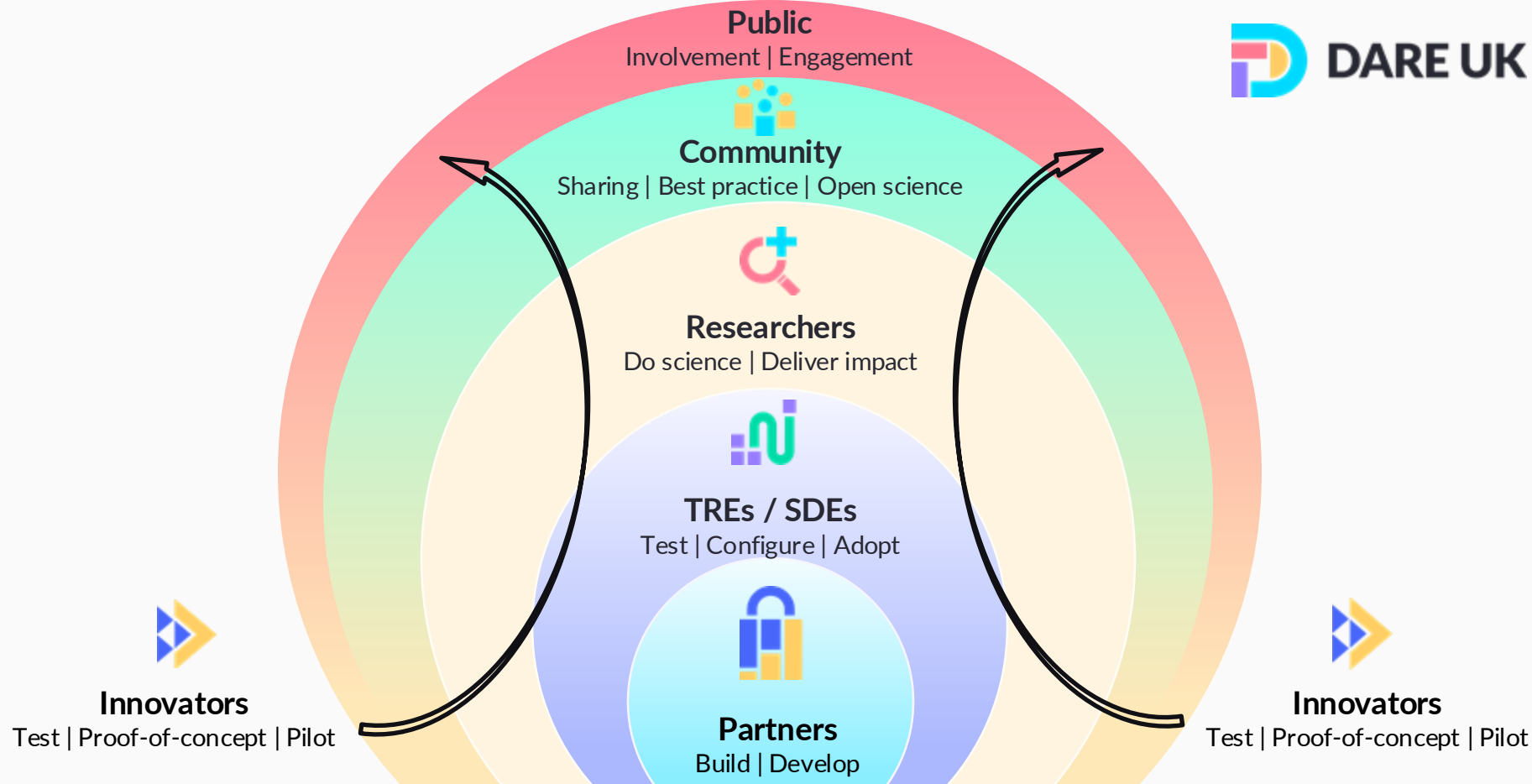
Mission

To put the UK at the forefront of sensitive data research and innovation by assembling the tools, technologies and standards needed to streamline secure data linkage and use



Mission

To put the UK at the forefront of sensitive data research and innovation by assembling the tools, technologies and standards needed to streamline secure data linkage and use



Mission

To put the UK at the forefront of sensitive data research and innovation by assembling the tools, technologies and standards needed to streamline secure data linkage and use

**Phase 1:
Design & Dialogue**

July '21 – March '24

£7.5m

**Phase 2:
Build, Test & Establish**

August '24 – March '27

£20.0m

**Phase 3:
Deliver, Optimise & Federate**

TBC



What is TRevolution?

adopting Standards building Trust enabling Federation



PROF PHILIP QUINLAN
Project Director



PROF CAROLE GOBLE
Co-Director



DR STIAN SOILAND-REYES
Co-Director



DR CHRISTIAN COLE
Co-Director



PROF SIMON THOMPSON
Co-Director



PROF JIM SMITH
Co-Director

Our three challenges

Possible

Technology development is rapidly changing what is possible.

Industry and research organisations drive the art of the possible

Not everything that is possible is acceptable and/or useful

Acceptable

Opinions from the public are vital to include in the design of technology solutions.

Policy and governance usually follows public opinion.

Not everything that is acceptable is possible and/or useful

Useful

Researchers seek to undertake leading research programmes.

They adopt tools that are usable and help them in their research.

Not everything that is useful is acceptable and/or possible

The headline

adopting **Standards** building **Trust** enabling **Federation**

Our project exists to **make federation easier** by enabling many platforms to work together

We support open standards, reduced friction in deployment, and help developers and communities connect their tools to a broader ecosystem. By doing this, we aim to make federation not just possible, but practical

Federation isn't one platform. It's many, working together.
Federation isn't a single platform. It's an ecosystem.
Federation is collaboration, not control.
to **join in**.

We help make that **possible**.
We help it **grow**.
We make it easier

The parts that build TREvolution

Compliant tools / frameworks that can be deployed across the landscape

Useful

Software to provide the mechanism to move analytics around

Possible

DIRECTOR: Providing the technical capability to connect TREs and tools

RO-Crate:
Providing a
meta-data
store for the
end-to-end
process

Acceptable

SATRE : Providing a
common set of
standards to define a
TRE

Acceptable

SACRO : Providing a
common and accelerated
disclosure control process

Acceptable

Five Safes : Providing
the decision-making
framework

Acceptable

Public Engagement and Involvement (PIE)

- Two PIE Coordinators
- Two Public project team members
- 11 members of the Public Advisory Group
 - Received >70 applications
- Collaboration Cafés
 - Engage with community (online)
 - Include very active public involvement
- Working with charities and organisations to reach new audiences
 - City as Lab
 - Kings Trust
 - In-person workshop with young people



RO-Crate

- Updated Five Safes RO-Crate profile that can describe TRE usage
- RO-Crate Validation Service to validate Five Safes RO-Crates (0.4)
- Framework and user interface for specialising metadata profiles

Benefits for adopters

- Enables automated validation of generated metadata
- Five Safes-aligned standard for packaging metadata within a TRE will help enable interoperability within and across federated TREs.
- Interoperability with wider FAIR practices (e.g. EOSC-Entrust, Google Dataset Search, Croissant, FDO)
- Customisation for TRE-specific metadata

FAIR Metadata

- TRevolution Knowledge Graph visualisation with a dashboard
- Templates, guidelines, and validation tooling for profile adoption
- TReCrate Profile for describing TRE metadata.
- Guidance on applying a FAIRification framework

Benefits for adopters

- Provides an overview of relevant metadata of appropriate RO-Crates within a TRE to assist stakeholders in understanding TRE ecosystem at a glance
- Offers practical, “just enough” FAIR metadata and guidance tailored to TREs.
- Improves transparency and trust in TRE usage by making metadata more accessible and consistent and supports reproducibility of research.
- Simplifies metadata onboarding for new TRE adopters by providing documentation, templates and tooling.

v2.0 (Beta):

- Support for Federation
- SATRE as the anchor framework for accreditation alignment against ISO/DEA/DSPT/CAF
- Machine readable

Benefits for adopters

- Community accepted standard for TREs in the UK within Academia, NHS, Industry and Government.
- An entry-point for further accreditation such as to ISO 27001 and/or Digital Economy Act.
- A straight-forward tool to define equivalence of capability between TREs in a federated network.
- Continued publication of SATRE self-assessments: satre.uktre.org

- V1.0 of Open-source reference implementation of a SATRE-compliant TRE will be released for adoption and deployment
- Kubernetes based
 - AWS
 - Azure
 - On-prem
- Ability to install other apps/services into TRE

Benefits for adopters

- Secure, SATRE compliant, TRE that can be deployed to multiple hosting platforms and allow deployment of TREvolution apps.
- A good platform for a federated project.

Statistical Disclosure Control

SACRO



SACRO will have:

- enhanced documentation and useability,
- a 'researcher-facing' app with a graphical interface to manage the 'acro sessions' containing their release requests.
- an 'aggregator' for use in 'distributed analysis' federation projects.
 - This will take outputs from workflows run using acro at different TREs, collate them, and produce reports showing how they meet the risk requirements for the participating TREs.

SACRO-ML

- Provides the capability for TREs to support projects where users are training AI models on sensitive data.
- This is a mix of
 - training,
 - process docs, and
 - tools for running automated 'attacks' to risk-assess trained models.

30

Tools and Adoption

Deliverables

- Five Safes TES: Software implementation easily installable into TRE
- Cohort Discovery: Software implementation easily installable into TRE
- Catalogue of suggested software stacks that can be utilised by TRE users

Benefits for Adopters

- Cohort Discovery:
 - Enables early discovery and feasibility analysis across datasets without requiring direct access.
- Five Safes TES:
 - Provides TREs with the capability to support secure federated analysis projects.
 - Allows researchers to run analyses across multiple sites while data remains within each TRE.
 - Ensures results are shared safely through local disclosure controls and governance processes.

Funding Opportunity Details: What are we looking for???

Purpose

Demonstrate TREs in action
Test & refine new capabilities
Prove value for researchers

Opportunities

Shape future UK TRE infrastructure
Raise profile with novel methods
Build lasting partnerships
Connect with public & policy audiences

... Long-term Impact: *unlock new forms of research & innovation!*

Funding Opportunity Details: **Eligibility & Partnerships**

- Must be based at an [eligible UK research organisation](#)
- One project lead per person; multiple co-leads allowed
- Organisations can lead/partner on multiple applications
- Must partner with at least one TRE
- TREs may join as co-leads (if UKRI-eligible) or subcontractors
- Actively engaged in the work; brings relevant expertise
- Lead or contribute to cross-domain research using *TREvolution capabilities*

Funding Opportunity Details: **Eligibility**

- International organisations **not eligible** as leads
- However: International researchers may join as **co-leads** (must justify value)
- Other international or non-approved UK groups may join as **project partners**
- Core team members cannot be **project partners**
- Internal collaborators: include as **co-leads or specialists**, not partners

Funding Opportunity Details

Funding available:

- The full economic cost (fEC) of your project can be up to **£594,384**.
- MRC will fund **80% of the fEC**.

Duration:

- **12 months** from 1 April 2026 to 31 March 2027

What we will fund:

People & Collaboration

- Project lead / co-leads' salaries
- Research & technical staff (incl. TRE partners)
- Public involvement & engagement (PIE) contributors

TRE-Related Costs

- Collaboration with TRE partners
- TRE access, setup, configuration, usage & admin

Research Delivery

- Consumables (incl. cloud computing)
- Data preparation, provision, preservation & sharing
- Open-source software use & development

Resources & Operations

- Equipment (< £25k)
- Travel costs
- Knowledge mobilisation & dissemination
- Estates & indirect costs

What we will not fund:

- Studentships including stipends
- Equipment over £25,000
- NHS research costs linked to NHS Studies

Public Involvement and Engagement (PIE) call requirements

Your application should include:

- An explicit and comprehensive work stream on PIE
- The costs of all PIE activities in 'Resources and cost justification'
- A dedicated PIE lead integrated into the project team
- Members of the public (public contributors/advisors) involved in project delivery

Public Involvement and Engagement (PIE) call requirements

During the project, you should:


- Have a clear and robust mechanism for **collecting feedback from public participants**
- Be prepared for a possible **DARE UK PIE evaluation**
- Set out **PIE measurement indices**
- Include processes to track (anonymous) **demographic and engagement information** about public participants

What does good PIE look like?

- PIE activities sufficiently and appropriately costed
- Engage members of the public who reflect a diversity of demographics and communities
- Engage with existing community groups to reach diverse public voices
- Embed the [PEDRI Good Practice Standards](#) for PIE
- –Could also use [UK Standards for Public Involvement](#)

View and download the
DARE UK PIE guidelines



 SCAN ME

*There is no upper limit to
the amount of award that
can be dedicated to PIE*

*We recommend around
10%!*

What is next?

Attend the **TREvolution collaboration café** this Thursday **2 October** at 13:30 to explore potential partnerships and ask questions,

Visit the [TREvolution website](#),

Attend the **Drop-In Session** on Thursday **23 October** at **11am** for any last minute question for your application

[Submit your application](#) by **Wednesday, 5 November 2025** at **16:00**.

Any additional questions?

Any questions related to the call

informatics@mrc.ukri.org

Any further clarifications

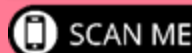
najmeh.modarres@dareuk.org.uk

Stay in touch!

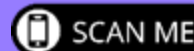
Visit our website



Subscribe to our
newsletter



Follow us on
LinkedIn



Follow us on X
(Formerly Twitter)

